A scenic view of a lake in the Loser Plateau, Austria. The foreground features a wooden deck with a railing, decorated with large wooden wheels and potted plants. A large tree stands on the right, partially obscuring a wooden structure. The middle ground shows a calm lake reflecting the sky and surrounding greenery. In the background, majestic mountains rise, with a small white building with a steeple visible on the right. The sky is blue with light clouds.

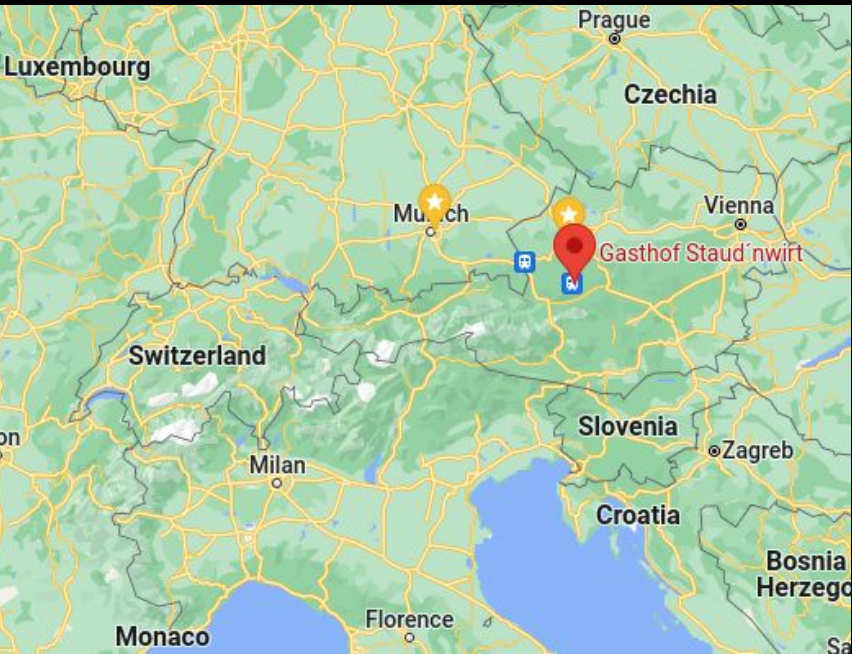
Loser Plateau, Austria

Paul Walko

What is this?

- The Cambridge University Caving Club (CUCC) started exploring Schwarzmooskogel Höhlensystem (SMK system) in the 1970s.
- SMK is currently 137 km (85 mi) long and 1125 m (3690 ft) deep.
- <https://expo.survex.com> maintains anything and everything about the expedition efforts over the years.

Getting There

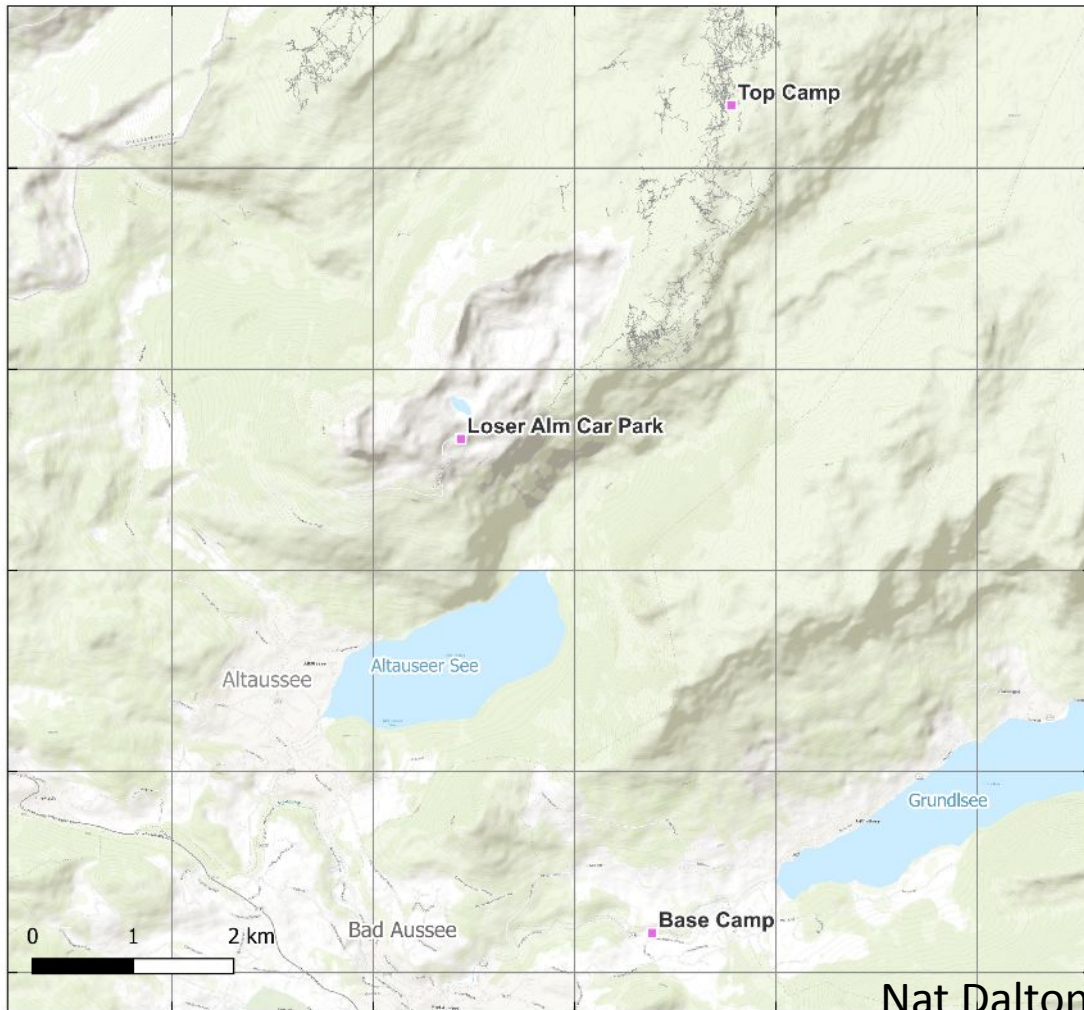


Basecamp

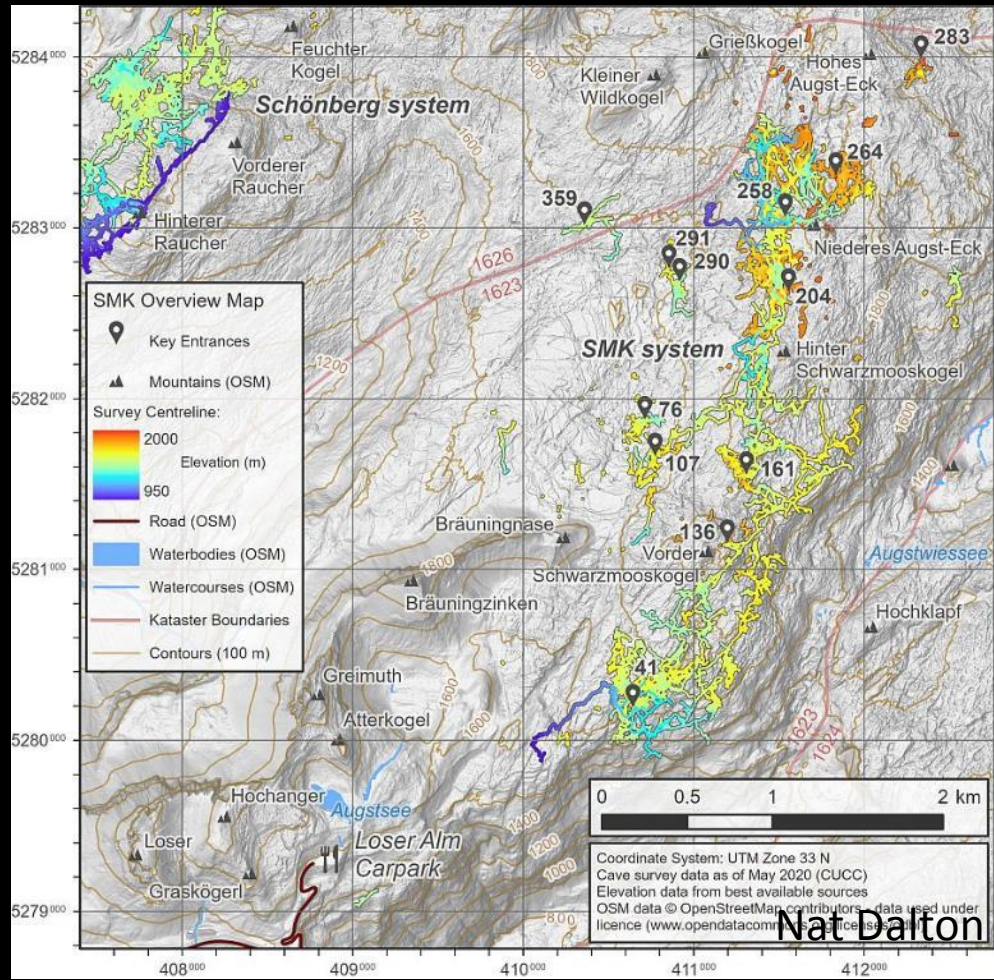




Eric C. Landgraf



Nat Dalton



Nat Dalton

Topcamp









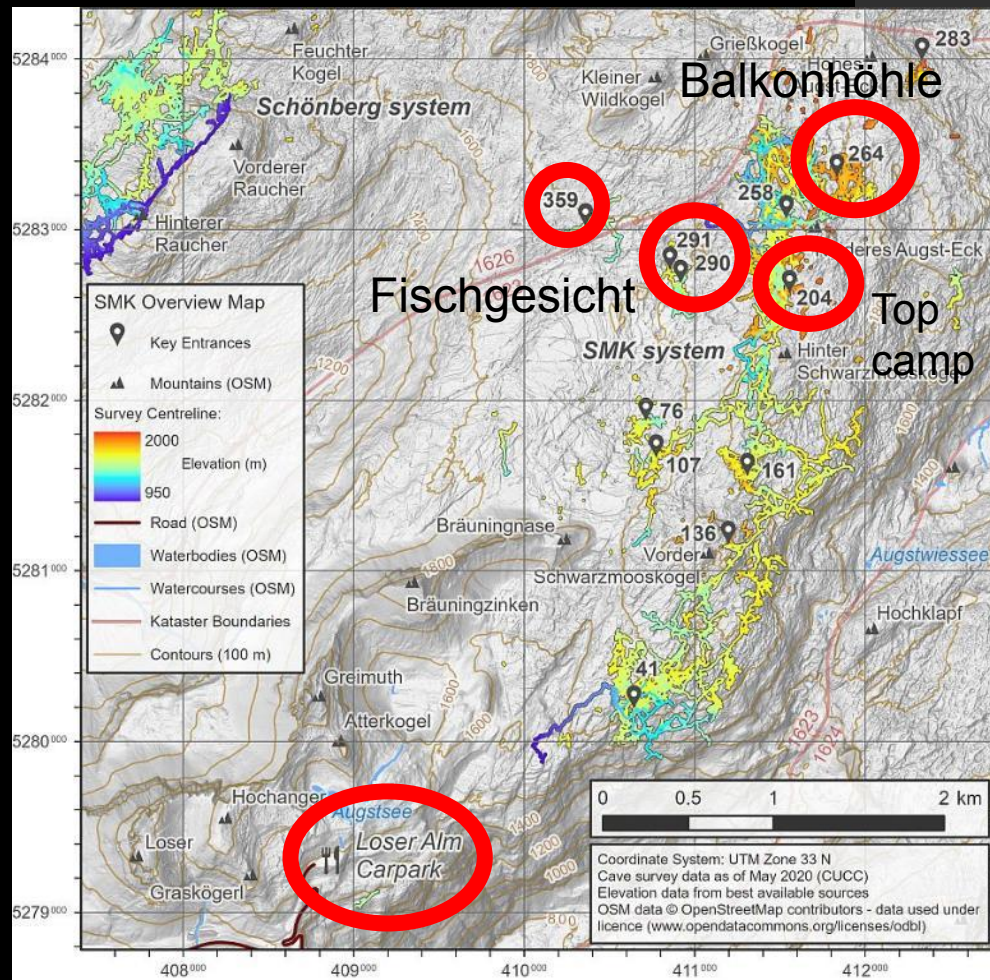






Dachstein (I think?)





Balkonhöhle



- <https://expo.survex.com/survexfile/caves/>
- Data is publicly accessible!

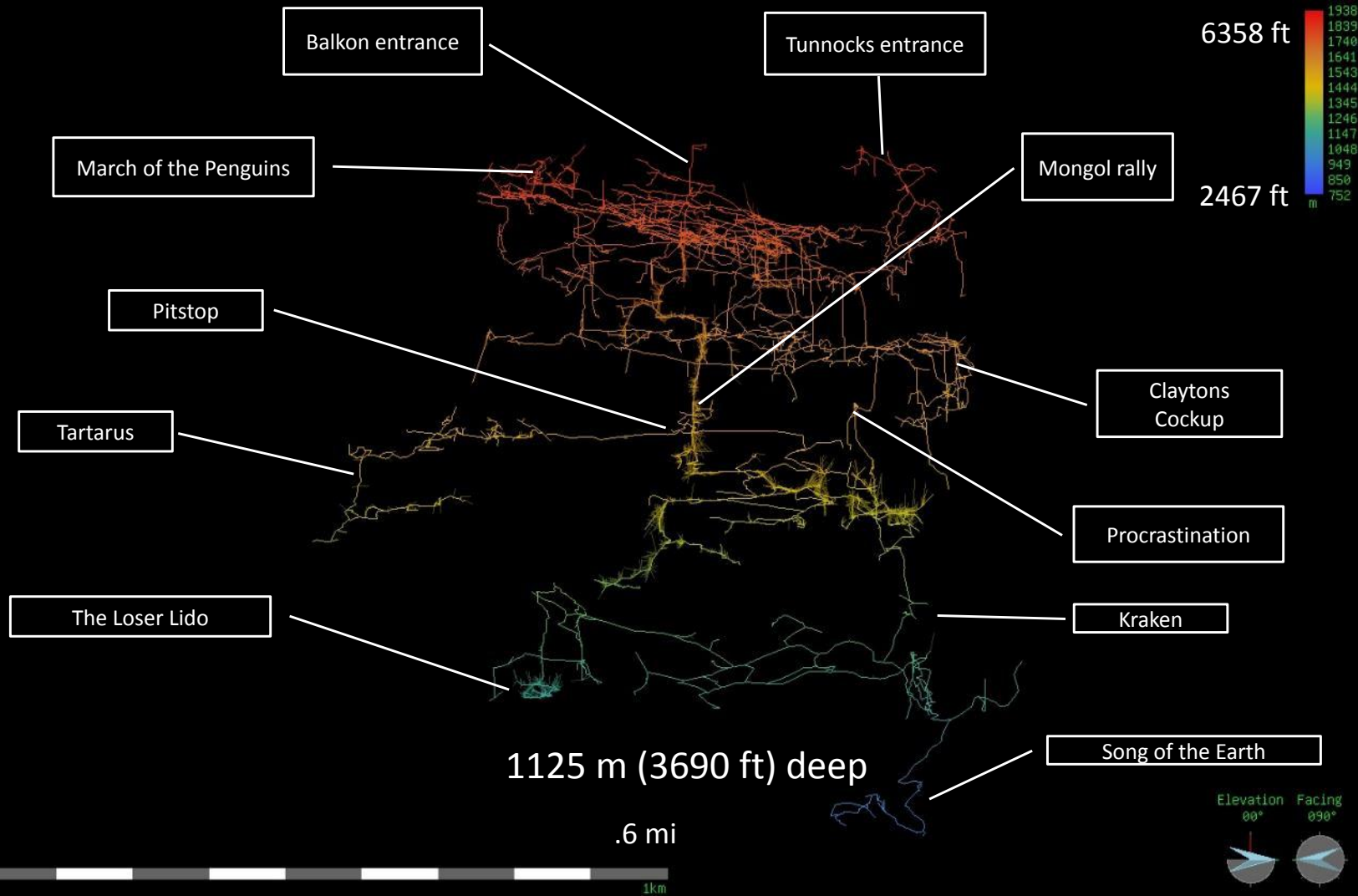
Caves with subdirectories

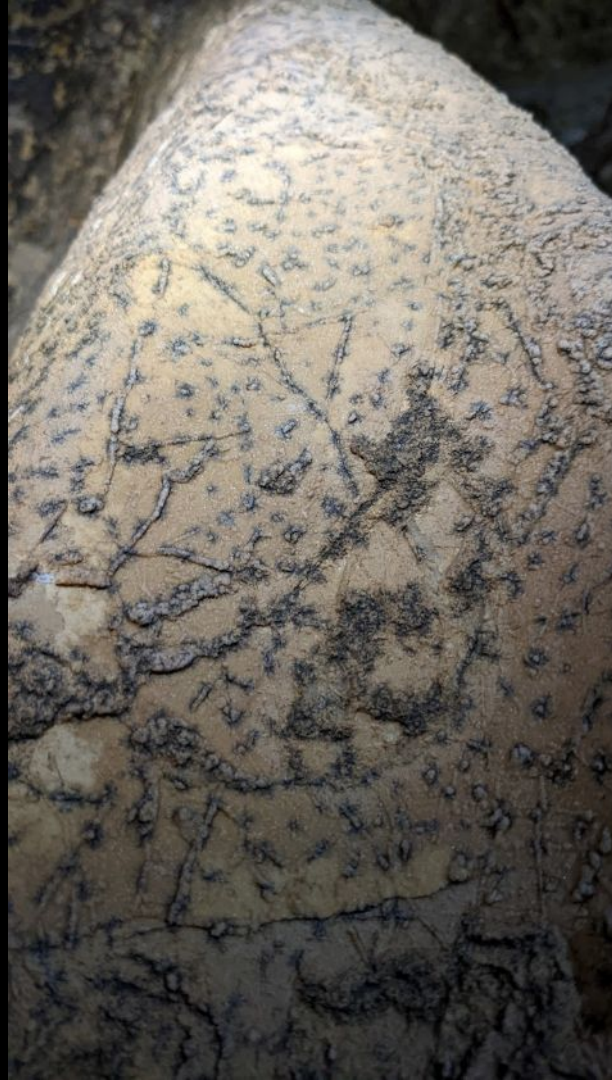
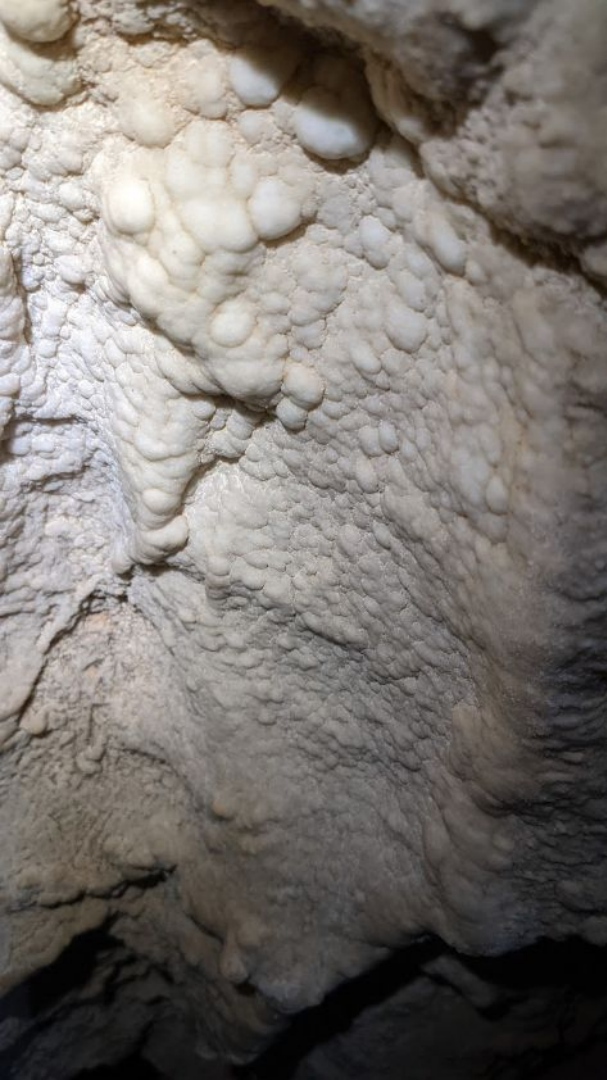
264 - [dates and explorers](#)

[PitStopAll](#) [TEMP-pre2018only-264](#) [above](#) [sloppy](#) [seconds](#) [amalgamation](#) [avalancheexperience](#) [badattitude](#) [belowhiltiaplenty](#) [belowhiltiaplenty2](#) [beyonddigdug](#) [beyondthunderdome](#) [bipedal](#) [bipedalpassage](#) [bipedalpassage2](#) [bipedalpassage3](#) [bipedalpassage4](#) [bipedalpassage5](#) [cant](#) [stop](#) [bat](#) [country](#) [cathedralLC1](#) [cathedralLC2](#) [cathedralchasm](#) [cathedralchasm2](#) [caving101](#) [chamber90b](#) [consolidation](#) [crashmop](#) [crushedplumbspitch](#) [darkarts](#) [darkartsI](#) [darkartsII](#) [darkartsiii](#) [darkartsiv](#) [darkartsv](#) [darkartsvi](#) [deadbatpitch](#) [deadbatpitchconn](#) [deadbatteryrun](#) [digdug](#) [dog_end](#) [series](#) [dontcomeadigging](#) [doublescoop](#) [doublescoop2](#) [einundzwanzig](#) [entrancepitch1](#) [entrancepitch2](#) [farside](#) [fatmanscoop](#) [fatmanscoop2](#) [frozennorth](#) [frozennorth2](#) [frozennorth3](#) [frozennorth4](#) [galactica](#) [gosserrwager](#) [gosserrwager2](#) [gosserrwager3](#) [gosserrwager4](#) [hilti](#) [nts](#) [bones](#) [pitch](#) [hilti](#) [nts](#) [near](#) [bats](#) [hilti](#) [nts](#) [near](#) [start](#) [hiltiaplenty](#) [hiltiaplentychamber](#) [hiltiaplentypitch](#) [hiltigalactica](#) [horizontalentrance](#) [icecock](#) [icecock2](#) [icecock3](#) [icecockLC1](#) [icecockLC2](#) [imfunckintired](#) [keepsongiving](#) [leedsbypass](#) [leedsbypass2](#) [leedsbypass3](#) [lemoncrapout](#) [lemonsnout](#) [lemonsnoutrosyringpiece](#) [lets](#) [be](#) [appalling](#) [liarsbakery](#) [longdrop](#) [longdrop2](#) [lower](#) [sussex](#) [by](#) [the](#) [sea](#) [mysterious](#) [schlag](#) [naturalhigh2](#) [northern](#) [straight](#) [northhole](#) [northhole2](#) [noseroack](#) [noseroack2](#) [nothing2see](#) [nothingtosee](#) [nothingtosee3](#) [nothingtosee4](#) [oneshotwonder](#) [penguinfellatio](#) [pitch59b](#) [pitpot](#) [pitpot2](#) [pitpot3](#) [pointless](#) [dig](#) [pointlessniffing](#) [pubicsynthesis](#) [rabbitwarrens](#) [rabbitwarrenstoeinundzwanzig](#) [roommop](#) [roomwithaview](#) [roomwithaview2](#) [roundabout](#) [scrottytubei](#) [scrottytubeii](#) [secondhand](#) [secondwind](#) [sloppyseconds1](#) [sloppyseconds2](#) [smashcrashpassage](#) [snowhole](#) [spanner](#) [sponge](#) [chamber](#) [sponge](#) [chamber2](#) [sponge](#) [chamber2](#) [Tiny](#) [tube](#) [sussex](#) [by](#) [the](#) [sea](#) [swingers](#) [the](#) [backslash](#) [the](#) [mendips](#) [tightyorkshireman](#) [tinaturmersmerkin](#) [turtlehead](#) [turtleheadco](#) [ulsagrotto](#) [underexcitment](#) [voyeur](#) [watertorture](#)

264













Fischgesicht Höhle <-> Glücklich Schmetterlinghöhle











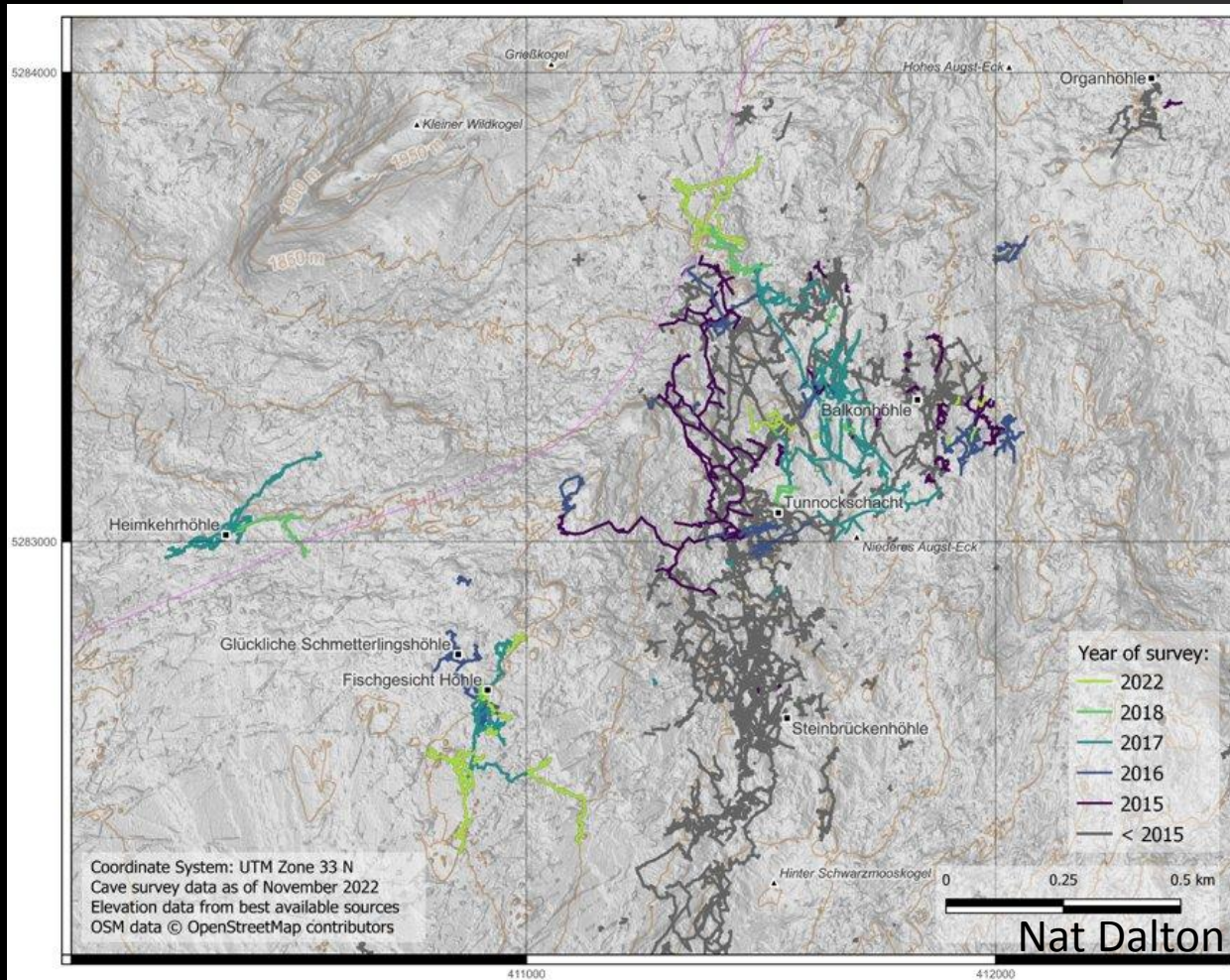
What do you do when you drop a drill?

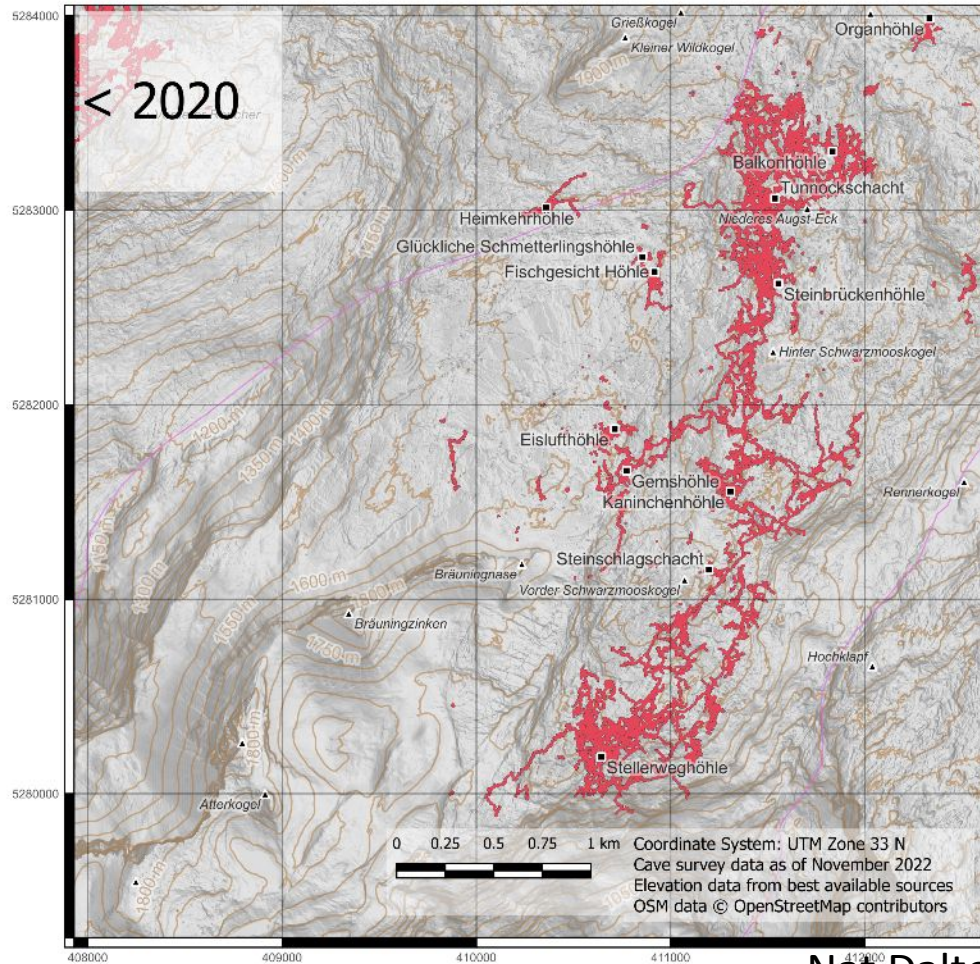


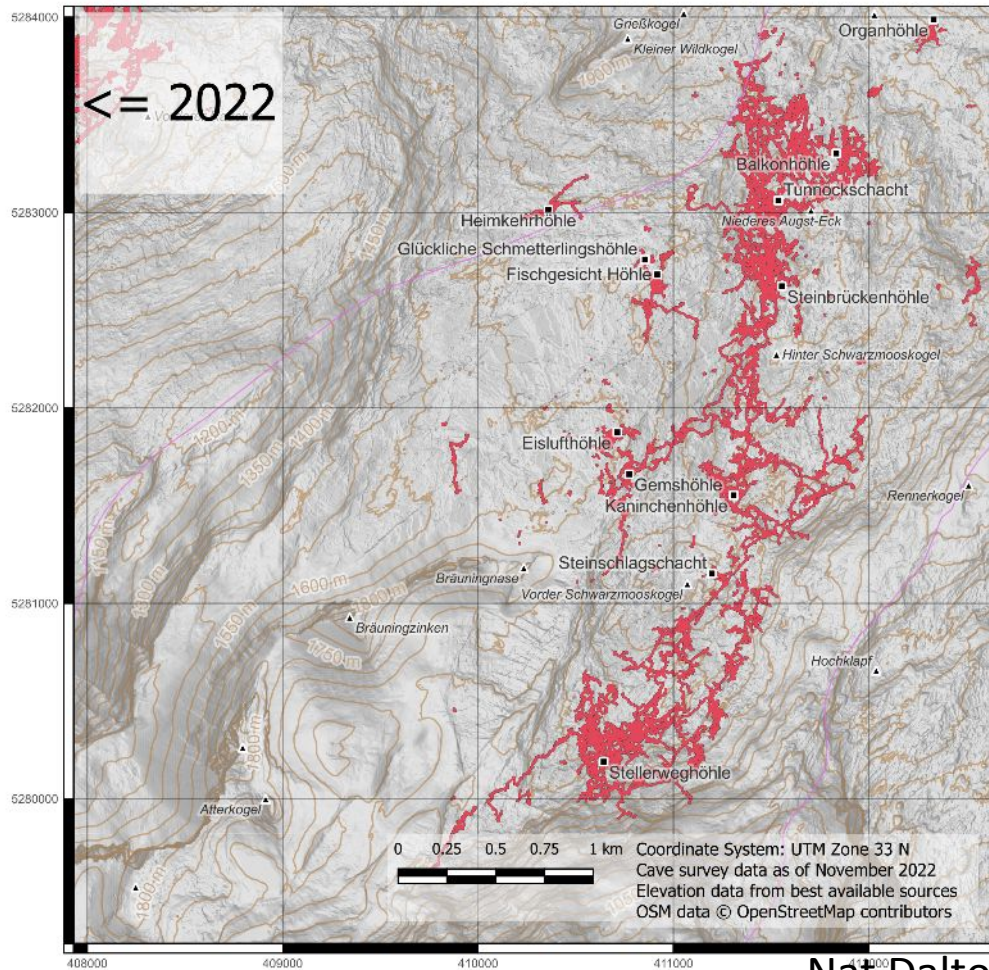
Rob Watson

Stats

- Over 3.8 km (2.4 mi) passage surveyed by 37
- Balkonhöhle gained 1.5 km (0.9 mi)
- Fischgesicht connected to Glücklich Schmetterlinghöhle and made them deeper
 - Still not SMK

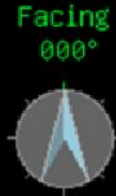
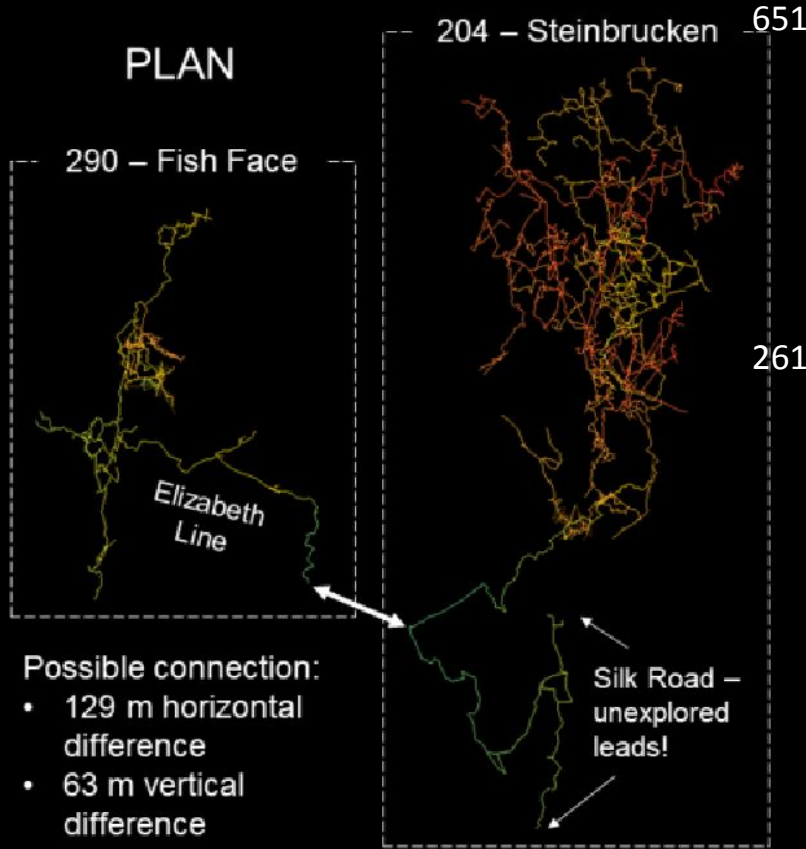






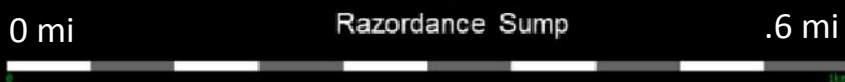
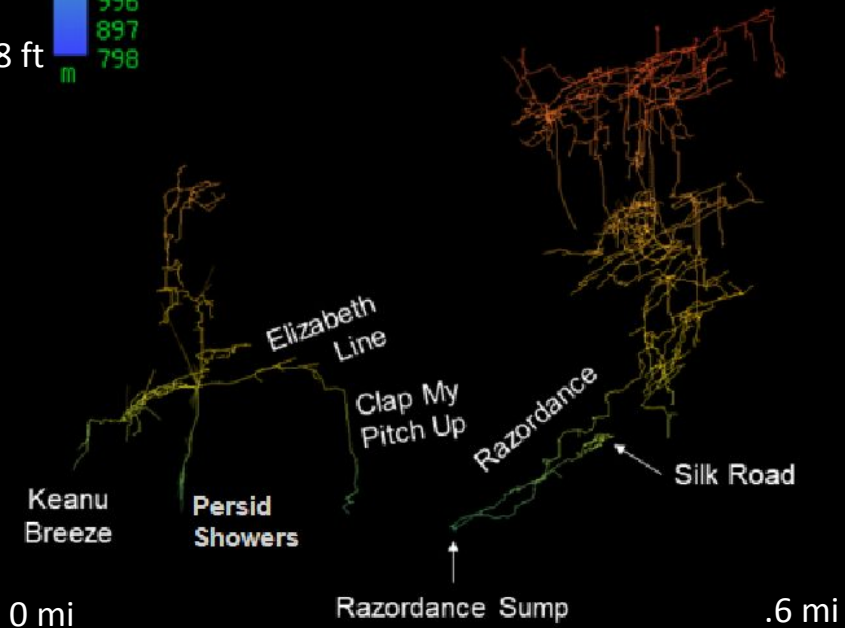
Nat Dalton

PLAN

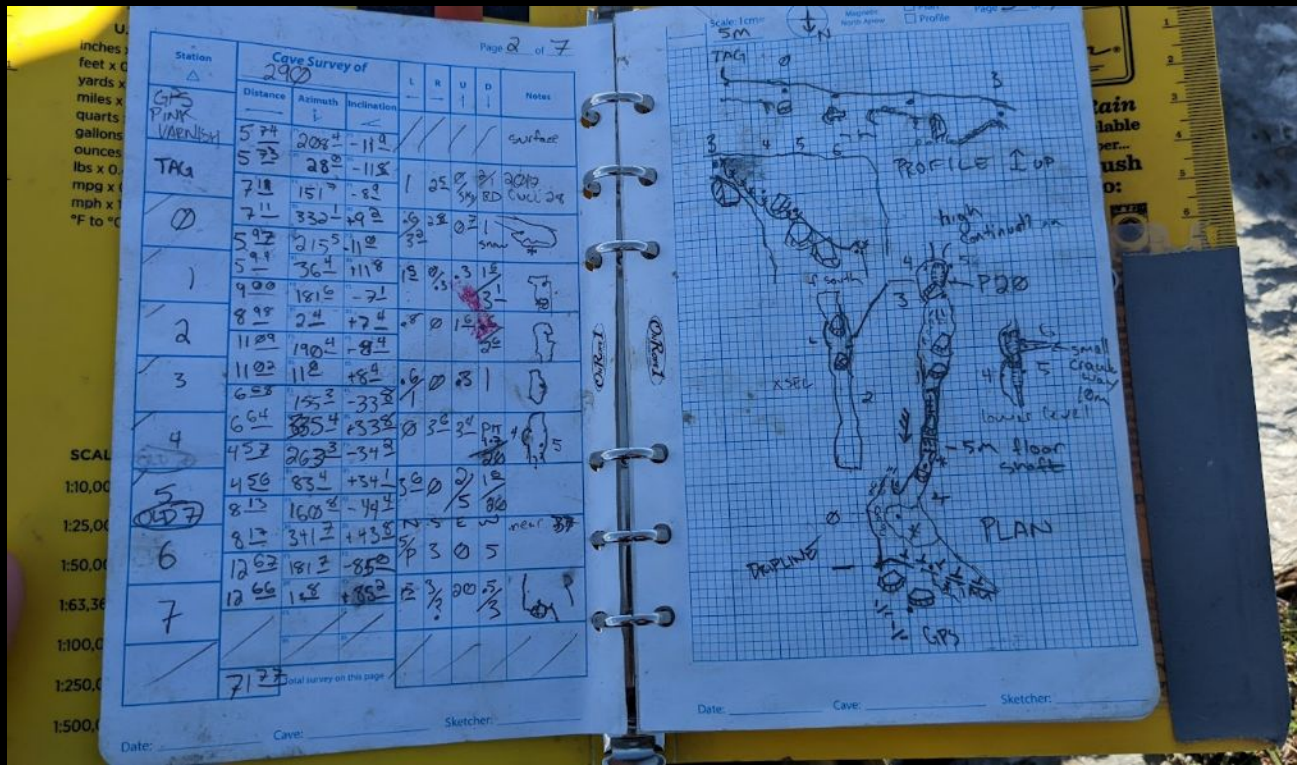


Fisch Gesicht (1623/290) and Steinbrucken (1623/204) in the SMK system, Loser Plateau, Austria (data on 21/08/2022)

ELEVATION



Data Management



Expo Online Systems Overview

The cave data and online publishing system (aka "the website") is now large and complicated. This page is the overview. The online systems manuals are split into these sections:

- [Troggle - initial training](#) - start here for complete beginners
- [Data maintenance](#) - for cavers finding and updating cave survey data using the software tools.
 - [Monitoring](#) the cave survey workflow status
 - [To-do](#) - data maintenance to-do list
 - [Accounts](#) - the Bank of Expo, the bier book
- [Survey handbook](#) - how to input cave survey data.
- [Handbook maintenance](#) - how to improve and update what you are reading now.
- [System maintenance](#) - how to fix and enhance the software tools we have written:
 - [the next expo](#) - preparing for next year
 - [The repositories](#)
 - [To-do](#) - online systems to-do list
 - [Troggle](#) - the system framework
 - [Other scripts](#)
 - [Server configuration](#)

How to use basecamp computers and networks, how to configure your phone for GPS, how to use your own laptop and "how to expo" in general are all part of the *handbook content*:

- [How can I contribute?](#)
- [Uploading your photos](#)
- [Uploading typed logbooks](#)
- [Uploading GPS tracks](#)
- [Recording a new cave discovery](#)
- [Bascamp computers and network](#) - what there is in the potato hut
- [Data maintenance](#) - finding and updating cave survey data using online tools
- [Configuring your own laptop](#) - for managing drawings and survey files, photographs and scanned images

Surveying and recording survey data is the reason all this exists. The "survey handbook" part of this handbook gives instructions to beginners for how to record discoveries and surveys.



Nerd Spectrum

Entry level nerd.

Apprentice nerd

Amature nerd

I can log in nerd

Super Nerd

Wookey

Questions

- Are you at Expo?
- Did you go to Cambridge?
- Did you go to US?
- Is surver on your PC?
- Did you bring your computer?
- Stem degree?
- Do you have a website?
- Do your own a survey device? (Extra point for digital)
- Do you lack tact?

Negative Points

- Humantes?
- Got whatsapp?
- Do you giggle?

Paul Walko : 2022

333.3 m surveyed this year.

Other years: | 2022

Status of all wallets for [Paul Walko](#)

Table of all trips and surveys aligned by date

Date	Trips	Surveys
Aug. 3, 2022	Balkonhöhle - Hiltiaplenty - Unnamed area above start of Sloppy Seconds pitches	Balkonhöhle
Aug. 4, 2022		13.0 m
Aug. 5, 2022	290 - WhichCave - Rigging Amelia's Pitch	290
--		horrorbank 89.4 m
Aug. 8, 2022	Fischgesicht Höhle - "Red Fish Blue Fish" entrance resurvey	Fischgesicht Höhle redfishbluefish 144.2 m
Aug. 9, 2022	Plateau - Sorting more caves	Plateau defyinggravity 83.2 m
Aug. 15, 2022	Plateau - "interesting" holes	Plateau

CUCC Expeditions to Austria: 1976 - 2022

Home | CUCC | expo_survey | 264 | 290 | 359 | [Survex](#) | [All Survex](#) | [Scans](#) | [Upload Scans](#) | [Drawings](#) | [Upload Drawings](#) | [Photos](#) | [290 \(FGH\)](#) | [264 \(Balkonhöhle\)](#) | [Data Issues](#) | [tasks to do](#) | [caves](#) | [QMs](#) | [ents](#) | [expoers](#) | [survey lengths](#) | [statistics](#) | [Expo\(2022\)](#) | [Control panel](#) |

CUCC expo 2022

Other years: | [2023](#) | [2022](#) | [2021](#) | [2020](#) | [2019](#) | [2018](#) | [2017](#) | [2016](#) | [2015](#) | [2014](#) | [2012](#) | [2011](#) | [2010](#) | [2009](#) | [2008](#) | [2007](#) | [2006](#) | [2005](#) | [2004](#) | [2003](#) | [2002](#) | [2000](#) | [1999](#) | [1998](#) | [1997](#) | [1996](#) | [1995](#) | [1994](#) | [1993](#) | [1992](#) | [1991](#) | [1990](#) | [1989](#) | [1987](#) | [1986](#) | [1985](#) | [1984](#) | [1983](#) | [1982](#) | [1981](#) | [1980](#) | [1979](#) | [1978](#) | [1977](#) | [1976](#)

See also the

[documentation index](#) for this Expo
[wallet completion status](#) for this Expo
[full logbook](#) for this Expo

At a single glance: The table shows all expo cavers and their recorded trips. The columns are the date in the month (July, August or September), Sundays in blue and a "T" for a logbook entry, and an "S" for a survey trip. The colours of the "T" "S" are the same for people on the same trip.

Caver	27	28	29	30	31	1	2	3	4	5	6	7	8	9	10	12	13	14	15	16	17	18	22	2		
Keiran Appadoo			T						S	T								T							T	
Philip Balister									S										T							
Kristian Brook																T	T									
Mike Butcher									S	T	S															
Aaron Clair									T	T																
Hannah Collings	T	T	T						S	S																
Nat Dalton																										
Dinny Davies																										
Anthony Day	T	T																								
Julia Day																										
Chris Densham	T																									
Paul Fox																										

All Tunnel and Therion files - linked to wallets, survey scans, frames and scraps

File	Size	Paths	Wallets	Scan files in the wallet
107/107sketch-v7.xml	571708	1730		
107/161connection.xml	21707	66		
107/entcleads.xml	5507	7		
107/fudgeDup.xml	6469	10		
161/161farnorthonlvB.xml	1479447	4484	1991surveybook 2009#07 2009#10 2009#14 2009#16 2009#31 2009#32 2009#33 2009#34 2011#11	page0061.png page0073.png page0076.png page0077.png plan.png plan.png plan.png plan.png plan0001.png plan0001.png plan0001.png plan0001.png plan0002.png
161/161oldmenB.xml	1535484	4672	2009#38 2011#24 2011#28 2011#29 2011#30 2011#33 2011#34 2011#38 2011#39 2011#41 2011#44 2011#45 2011#46 2011#47 2011#48	blownaway-plan.png correctedsurvey.jpg notes001 plan-soilchute.jpg plan.png plan0001.jpg plan0001.jpg plan0001.jpg plan0001.jpg plan0001.jpg plan0001.jpg plan0001.jpg plan0001.jpg plan0001.png plan0002.jpg plan0002.jpg plan0002.jpg plan0002.jpg plan0002.jpg plan0002.jpg plan0002.jpg plan0002.jpg plan0003.jpg plan0003.jpg plan0003.jpg

On-Demand Lineplots

Survex File: caves-1623/264/PitStopAll

Included files: [lower_balkon/pitstop](#) [lower_balkon/safecomfortable](#) [lower_balkon/pitstop_2](#) [lower_balkon/pitstop_3](#) [lower_balkon/pitstop_4](#) [lower_balkon/northernpowerhouse](#)

```
; Locn: Totes Gebirge, Austria - Loser/Augst-Eck Plateau (kataster group 1623)
; Cave: 264 "Balcony Hohle"
; (Originally 2005-05)
```

```
*begin PitStopAll
```

```
*include lower_balkon/pitstop
```

```
*include lower_balkon/safecomfortable
*equate safecomfortable.56x pitstop.56
```

```
*include lower_balkon/pitstop_2
*equate pitstop_2.2x pitstop.2
```

```
*include lower_balkon/pitstop_3
*equate pitstop_3.56x pitstop.56
```

```
*include lower_balkon/pitstop_4
*equate pitstop_4.44x pitstop.44
```

```
*include lower_balkon/northernpowerhouse
*equate northernpowerhouse.0 pitstop_4.4
```

```
*end PitStopAll
```

Differences between edited and saved versions of this file

Save this edited svx file

Run

OUTPUT FROM PROCESSING

Survex 1.2.45

Copyright © 1990-2021 Olly Betts

Survey has no fixed points. Therefore I've fixed pitstopall.pitstop.2 at

Solving one equation...

Survey contains 325 survey stations, joined by 326 legs.

There are 2 loops.

Total length of survey legs = 1226.08m (1226.08m adjusted)

Total plan length of survey legs = 1140.67m

Total vertical length of survey legs = 328.38m

Vertical range = 82.68m (from pitstopall.pitstop_2.2 at 4.23m to pitstop

North-South range = 468.06m (from anonymous station at 253.01m to pitst

East-West range = 206.73m (from pitstopall.pitstop_3.8 at 8.42m to pitst

186 1-nodes.

102 2-nodes.

10 3-nodes.

1 4-node.

6 5-nodes.

2 6-nodes.

2 7-nodes.

5 8-nodes.

1 9-node.

5 10-nodes.

1 11-node.

1 12-node.

1 14-node.

1 17-node.

1 19-node.

CPU time used 0.01s

No differences from last saved file.

Click here to view the [3d file](#) produced as output

Differences between edited and saved versions of this file

Save this edited svx file

Run 'cavern' on this svx file



B.11 - Lakes D. Stepe, Jas. Park, S. Park, D. Park, G. Park, D. 108/110
 D. No. Becker 2. Path in Pink. P.P. 2. 108/110

F	1	2	3	4	5	6	7	8	9	10	11	12	13	14	15	16	17	18	19	20	21	22
A	2	1/49	155/2	-05/3	7/2	2/8	2/6	1/2	1/2													
	3	7/74	132/9	-10/0	1/0	4/5	2/5	2/2														
	4	8/60	153/4	-9/0	7/6	0	-	1/8														
	5	8/64	109/9	-45/9	1/9	3/5	7/1	1/6														
	6	4/23	195/8	18/4	3/4	0	2/5	1/4														
	7	13/11	97/2	-1/8	0/8	2/2	7/5															
	8	5/57	56/8	11/1	0/3	4/2	5/1	10/9														
	9	7/86	118/2	-20/9	4/6	0	3/6	1/4														
	10	9/10	83/7	-10/0	5/4	3/8	4/5	1/6														
	11	5/90	80/3	-10/2	0	4/1	4/8	7/6														
	12	8/22	0/3/5	-1/5	2	2/8	5/1	1/7														
	13	6/72	3/8/1	-8/2	4/4	2/4																
	14	5/22	123/0	-2/7	2																	
	15	7/01	0/7/1	-16/4	0	1/1	2/3															
	16	4/54	112/9	-21/6	1/6	0/6	0/4	0/4														
	17	5/24	0/5/5	-3/5	0	0/6	0	0/4														
	18	8/08	0/3/4	-1/7	1	0/5	0/5	0/3														
	19	1/14	2/9/0	-1/12	0	0/6	0/6	10/4														
	20	3/22	103/0	-1/7	0	0	0/4	0														
	21	5/07	63/4	-1/4	0	0/7	0/3	0/6														
	22	8/08	103/4	-1/6																		



turnbacktime

North

Plan view, 000° up page



Scale (1m)

0 5 10 15 20

Scale 1:250

Survex 1.2.36 - <https://survex.com/>

turnbacktime 1000° 1:250 1/2 Processed: 2018.08.05 17:58:49 W. Europe Daylight Time

Topcamp Pt 2







Prospecting











Basecamp Kitchen









Future Goals

- Continue pushing Balkonhöhle
- Connect Fischgesicht to SMK
- Push Heimkehrhöhle