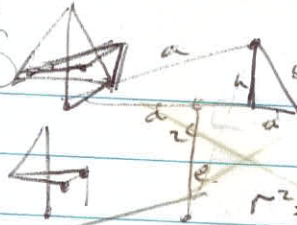


2015  
2015



$$ad^2 + h^2 = a^2$$

$$(b-d)^2 + h^2 = b^2$$

08/07/15

JOE + LUKE

107

CALLOUT = 22:00 HRS

$$r^2 = e^2 + (c/2)^2$$

$$d = \sqrt{a^2 - h^2}$$

$$(2c - \sqrt{a^2 - h^2})^2 + h^2 = b^2$$

$$(2c)^2 - 4c\sqrt{a^2 - h^2} + a^2 - h^2 + h^2 = b^2$$

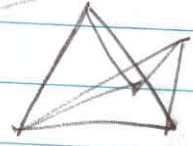
$$\frac{(2c)^2 + a^2 + b^2}{4c} = \sqrt{a^2 - h^2}$$

09/07/15

JOE + LUKE

107

CALLOUT = 22:00 HRS



09/07/15

DAVID + RACHEL

BALKON HOEHLE ENTRANCE

22:00

NOTE! Nobody at base camp, so these callouts might not get cancelled in time.

~~12/7/15.~~

~~Rachel, David, Matt~~

~~Balun Balun - pushing Dark Arts~~

~~Callout: 22:00~~

~~12/7/15~~

~~Joe, Luke, Uly, Jerry~~

~~107 - Bottom of China~~

~~Callout: 22:00~~

~~13/7/15 Joe, Jilly, Jenny~~

~~107, Wonderland~~

~~Callout 20:00~~

~~13/7 Luke Rachel David  
Bulky~~

~~14/7/15 Anthony, Mark, Dan~~

~~Tunnods finish string theory rig~~

~~Callout 8pm~~

~~19/7/15 Olly & Jenny~~

~~107 → Old Route~~

~~Callout 20:00~~

~~19/7/15 David Julia George~~

~~Balcony Pushing lead 90B~~

~~Callout 21:00~~

~~19/7/15 Luke Rob~~

~~Down Balcony~~

~~Descending 59B → then join one  
of other parties~~

~~Callout 22:00~~

~~19/7/15 Rachel & Frank~~

~~Balcony Lead 86~~

~~Callout 22:00~~

~~19/7/15 Anthony & Dan → Base Camp~~

20/7/15

~~Anthony/Rachel Tunnels Number of the Beast 23:00~~

~~David/Luke Balkon H 94a/95a 22:00~~

~~Frank/Rob/George Balkon H New hole @ base of entrance shaft 22:00~~

To take to 204

tea, coffee, cordial, bottles, sugar, nail polish

~~23/7/15~~

~~Olly & Jenny 107 boulder route~~

~~Callout 07:00 24/7/15~~

~~24/24/7/15 Via walking down hill  
Callout 14:00 at base camp~~

~~Philippa~~

~~rope - long arm.~~

~~24/7/15~~

~~Woolley + Jenny~~

~~107 ⇒ 101~~

~~Wonderland / Old route~~

~~Fam 28<sup>th</sup>~~

28/07/2015

~~Woolley + Jenny → 107, towards <sup>RUNNELSTONE</sup> ~~run off~~ ~~stone~~ OUT 00:57  
↳ 07:00 on the 29th~~

~~Jenny Woolley  
MATT 107 coldest place in ~~the~~ ~~world~~  
earth [callout 20:00]  
Would like light down hill  
out ~16:45~~

~~1/8/2015~~

~~Woolley & Matt 107, smooth sandy bottom  
Callout: 20:00~~

~~1/8/2015~~

~~Olly & Jenny 107, old route.  
Call out: 07:00, 2/8/2015.~~

~~Olly, Jenny, Woolley & George callout for 8pm 2015-08-04  
(CANCELLED) by voice call from 76 Givi. Andy.~~

~~2015-08-05 Andy & Michael W.~~

~~Koppenbroun Bad Aussee station to Koppenbrülehütte  
Carpark.~~

~~ETB 6.p.m @ potato hut callout 8 pm~~

~~Balloeks - wouldn't believe the river could drop that much  
since we received it 18 hours ago :-c~~

2015-08-08

~~Balson Martin & Trust 11 pm~~

how many

~~11 pm Martin Jacob George Nathan Balson~~

~~→ Tomoko trip also Fam being dealt with by Ma et al when they get out~~