

~~tested~~ squinted WD40 started and we limped into ground see at about one in the morning after twenty one hours driving yod was bigger.

TR6 Nicky + Tony.

Managed to avoid Plank etc in Dover, went swimming + drink in the Louis Armstrong. Wended our way towards Austria saying hie by not bothering to eat. Nicky slid down a glass partition at a motorway cafe in a dead faint. Went swimming. Hit a highly-devalued town (Wasserburg) in the evening before cruising on down via a bar or two to the car park. Wended up to 113 then above, found an open entrance (60' phs), returned to meet everybody at Bar Ricker (having seen John's car at the car park) before finally finding everybody at the composite bar.

Team Reclining Seats

A featureless track from Zeelungee to Wasserburg for a walk for a sausage, thence to Ingelstadt where Philip's eyes were closing as a consequence of Carl's having given up between Rushden and Cambridge.... Failed to find Campsite at Ingelstadt - thumped on down to a "service station" post 10 miles where we crashed on ~~Reclining Seats~~ ~~took~~ and slept 10 hours.. To Gunderssee without incident (to the soul of Carl's snore) and a drink at the OTHER Gunderssee capsite. Spotted a cross cent on betum and so off for a walk up on the plateau.

132 = 142

Monday.

Mike, Wigg¹

Raced along the path, through the woods & into the big chamber pitch used the rusty bolts which have since been failed by the BOLT INSPECTOR. Went down the tube pushed by Tim gravelled road & followed draught to a sizeable cleft, free-dribbed up this till eventually returned to the bottom of the big chamber. free-dribbed big chamber wall to passage 50-60' above pitch, possible bypass. Out quickly after 4 hrs.
Mike.

Wednesday

Ben, Julian - hole that hasn't got a name yet. 140

Schwarzjuroskögel route proved best way, lots of chamois. Julian belted down to John's 'ring' bolt & down 80ft shaft. Bolt on cholee by boulders with small impenetrable rift - through which could be heard tantalising heavy drip. ~~Had~~ 30ft down shaft is a big boulder, ~~above~~ on the other side is a passage 25ft up heading in the direction of the drip - by this time Ben had finished putting in two bolts on the entrance pitch & arrived down to have a lay while Julian started bolting up towards this ~~the~~ passage. He was even called upon to lifeline when Julian was 3 bolts up leaving me more for John to climb to GLORY..

Time 4hrs.

Ben →

Mike, Dave - surveying 132 142

Wed 27

Latchensechsen is as hard as ever, and this short trip seemed more tiring than thirty hours down 115. Still, plenty of time to get fit. Poked around in the huge chamber, but the boulders are too big - size of houses. Surveyed in, and bugged off out.

- the diabolical dabson nearly made the car park in one go, but then boiled over very loudly indeed!

Wednesday.

John Naomi Nicky Tony.

It seemed like a good idea to drive up to the car park and walk around to the Wildensee for a swim. Sadly the temperature was rather high so that those of us who were feeling the effects of the previous day found the going a little tougher than those who weren't so much but who were feeling the effects of the heat anyway. What's more it's a long way to the Wildensee, but ideal for swimming, excellent diving points, lots of little fish nibbling at your legs etc. The return via the Apfelhaus was arranged by the proprietors such that one felt slightly thirsty. One amongst us managed to buy their first pint rather quickly (excellent one should add) and a further $\frac{3}{4}$ pint led to a lot of limbs waving along the continuation of the path. A high speed surge lasted about 35 minutes before it collapsed completely and the eventual return to base was rather more subdued.

Tony M.

Wednesday 27th.

Chas, Pete. Surface Survey and Prospecting below 115.

The aim was to find the end of the fertility series popping out of the hillside below 115. We surface surveyed down to a permanent station, marked with bolt hole and lots of red paint: P1983/1. This was almost directly below 115 and on the edge of the big trees. It was at E 77.2, N -237.3 H - 195.8, whereas the end of the fertility series was at

G30 : E 139.7 , N -54.2 , H -187.8 . So we were (!)

At the right place, but the cave end was 180m into the hillside
We had a good look round but didn't find any signs of caves there.

So we looked at a big phreatic entrance further east (up the valley) and ~ 50m higher. This was looked at in 1982, but a bit of prodding released lots of loose boulders + we were able to follow up a narrowing bedding plane at ~60°, for 10m until it got too loose/small. Very difficult descent on scree to the end of the ~~Albtrauser~~ See + then the Schneiderwirt for Weizen Bier.

Rele

Neds 27th.

Becky, Wiggly - 132. \equiv 142

Went to "the pitch near the entrance" where Wiggly tried very hard to kill himself by putting his weight on a hold which broke off. Much of the other stuff at the top (in fact all down) is of the same ilk. The pitch is ~ 20m w. a break at 10m,* going to ~~the~~ a small rift with a leading gale. Bashed our way through a squeeze into another small rift - still with leading gale - which closes.

Becky.

* Put a ~~small~~ bolt in on the right hand wall (mainly to calm Wiggly's nerves) but actually used a fine natural bery on the other side of the lds, reached by traversing to the left.

bottom of the lavatory pan. This was followed until, after the
light gave out (official version) or the light fed up (unofficial
shit-storeroom version), in either case only about 60'.
That's all.

Incision



MONDAY 1st AUGUST - Phil's 29th BIRTHDAY TRIP
Wiggy, Gail + Phil's down 132142

Wiggy failed to find the way to the big pitch...
We were going to rig the hole that Mike was keen on at the
NE end of the BB-shanks... but we couldn't find it.
ANYWAY we throttled around a lot into the level of the
entrance series of 45° interconnected steps and found a
4m x 12m chamber, approx 65m high with a pitch takeoff
15m down from the roof and v. big ~~shaded~~ jammed boulders
15m down from that. Surveyed from there back to near
the entrance.

Hacked a lot of boulder with the bush knife/boulder-
basher/machete, path to 132 now almost reasonable.

142
132 or 18 this ~~132~~ now... Thursday 4th
Phil & Gail. - 5 Hrs

Phil & Gail also finally defestered themselves from the Berges restaurant to discover pastures new in 132/6.

The weather was Lake-District disgusting and it hailed as we hacked up the bunds. After attempts to correlate

the two surveys, the 2nd pitch was bolted in the dropping chamber which was, under these weather conditions

filled with spray. Well, perhaps not filled, anyway,

while doing this, we came a minor whooshing sound at about 1345 and it got a little wetter + I dropped a hanger + RR down the pitch. Finished bolt (at least 1500×10^3 kgf on the Bridle Scale

(est.)) and ~~did~~ didn't rig it because it looked wet down there...

Instead, went out of chamber + pulled up rope out of the water (the bolt below in the chamber was not rigged) and left $1 \times 13m$ and $1 \times 15m$ rope there for next time, the rope on the pitch is 35m I think. Then

we climbed up Wiggins' Way (45° up) and intersected the same stream high up - excellent climbable stream in clean white limestone, a bit like Tolly but sharper. If this cone connects

with ~~but~~ them this would be the way to get extra height. ~~But~~

did a couple of legs up the slope (whilst Phil was bolting) but gets a hard dump so return trip in dry weather. Back to main route

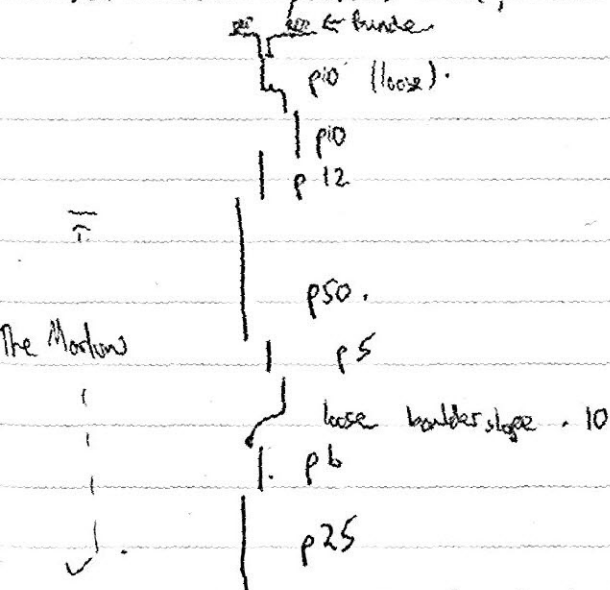
to have a look at the Big Claws - failed to find it AOTW. Skated a lot of hips + clunks, found a gravel bypass to the Bed Step (we think). V. bad walk back in vis. down to 6-7'! Overtaken by Demondation on the Toll Rd. Left 20m rope by cairn after entrance to the bypass.

Thursday 4th

Tony's 2nd Mile 144.

Pete, Dave

[A Sat] Having checked the boys in the Bergrestaurant (recommended by muddy boy) we hurried up to the entrance. Pete found his gear rather wet and complained quite a lot before changing. A short bundebash to the entrance and we were in. The head of the first pitch was rather loose, and so felt my stomach, but we pressed on, and



The top bits are very loose, the middle bits vertical like the rift in 115. We hit a small bit of horizontal phreatic stuff + thought we were about to walk into Skelleney, but it carried on down. 2 pitches later we hit a big stream in a very high canyon 2km wide. At the top of an estimated 20m pitch we had run out of

climb down to phreatic area

p30 through narrow slot (thread below)

p7,15

to floor of large vadose stream canyon.

Avoided paying entry fee. As a token gesture we looked at calculators to fill in time before rendezvous with team gear shop.

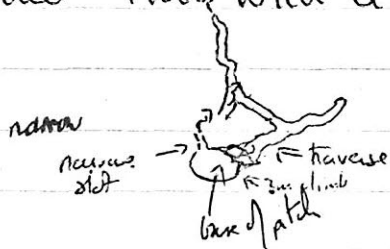
Saturday 6th

Dave was so keen to avoid caving that he sliced his finger in two with a pair of scissors.

142 / 41

Phil, Julian, Naomi.

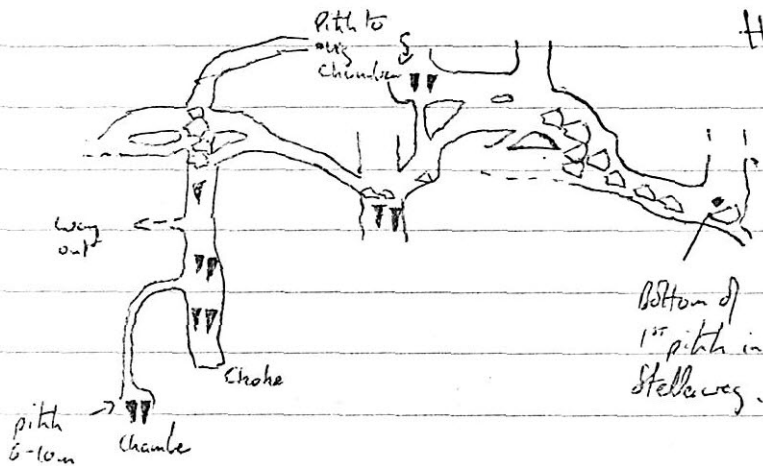
After a very wet walk up to the entrance the Intrepid trio finally went underground. The pitch in Phil's extension was quickly gained and Julian kitted up and went off down the 1st pitch of 7m to a pile of jammed boulders. From this platform another pitch of 20m to a rebelay and another 10m to a floor lead on. From this a pitch of 5m reached another floor with a stream leading on down which was not pushed to a conclusion.



While Julian was exploring the pitches, Phil and Naomi worked back towards the main route

climbing up assorted 45° ramps towards the roof. One particular one was followed up some steep climbs to a pot with water falling down it - down the pot, a 20' (approx)

climb lead to a boulder floor - the ascent of the pit would need tackle and so was left. Phil and Naomi arrived back at Phil's pitch just as Julian was grovelling up to the top. All the tackle from Phil's pitches was moved back to the main Route Junction and the trio



then left to find the Main Route Big Pitch Route into the large chamber. Various ramps and tubes were investigated and the ramp/chamber leading to the big

pitch was pretty well investigated - a route being pushed down to the bottom where it chokes. Near the top, on the right, a route was pioneered down a tube and across a ramp and then up a free climb at the end of the ramp. At the top of the ramp turn right and this comes into a very large sloping chamber.

Descend to the bottom of the chamber and next to a very large block is the old landing of the 18m pitch in Stellerweg. Julian and Phil and Naomi then climbed up from the block and down into the Stellerweg double traverse passage where Julian positively identified the bott hole - so the connection was confirmed. The trio

then made their way back to the entrance, taking several photos on the way out.

Naomi: 5 hours underground.

Sat. 6th 143 Pete, Chas

We surveyed in and derigged out. It was fairly damp today & Chas whinged all the way down.

We marked the path to the pot with loads of yellow tape, diving line, bin liners fluttering from branches of katchen and millions of cairns. Pete sawed valiantly away with a baby hacksaw. Unfortunately it was daylight when we came down again so we couldn't test its efficiency but it's good in daylight. 25 mins down to Stögenweg and another 25 mins back.

5 hrs, 0.

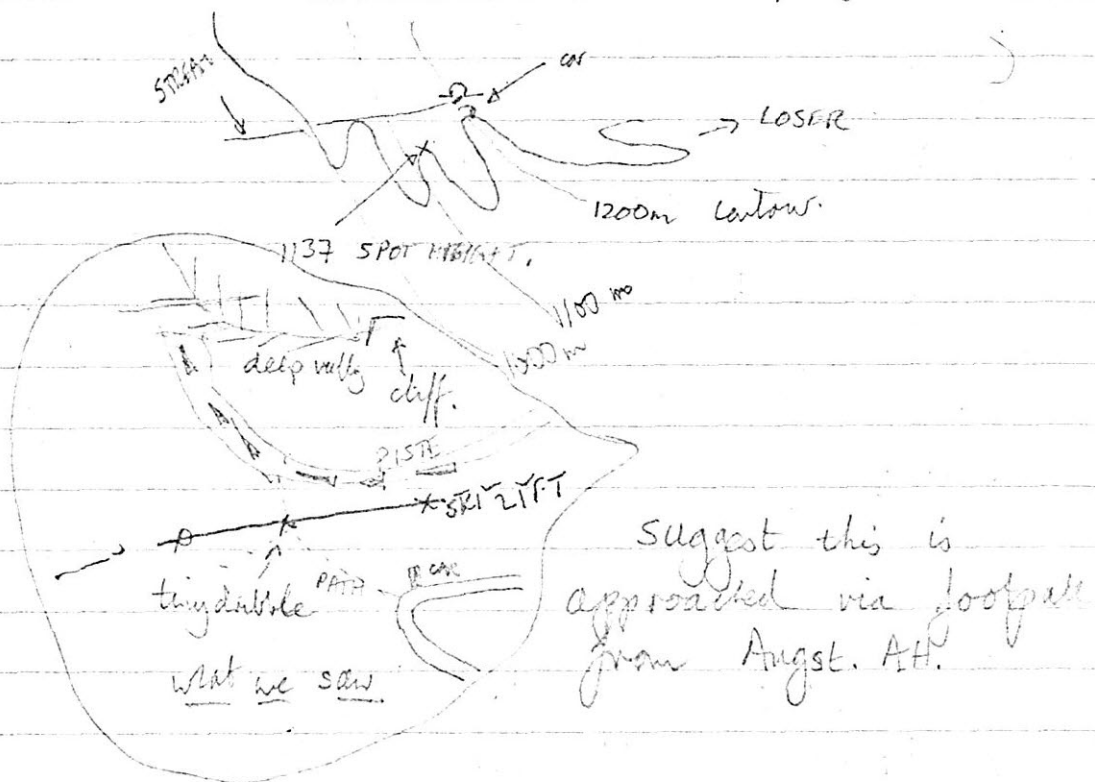
Sunday 7th Phil & Gail

We went to look for resurgences near the road to the plateau. We did find a couple of streams by walking off down the piste from the third hairpin bend right up

the road: -

Movement up the second streamway was severely hampered by felled pine trees and extremely forceful nettles. Somewhere around here is something marked "no tile" on the map

What the map says



7th AUGUST.

Mike, Julian, Naomi, Chas and Wiggy.
Investigated various large dry streambeds near

Nagelsteghöhle in an attempt to find the same. A large draughting hole marked 1626 / 5 was found between two streambeds which consisted of a \approx 15' climb down to a shingle slope leading down into the cave. Party retired to the pub.

Addendum

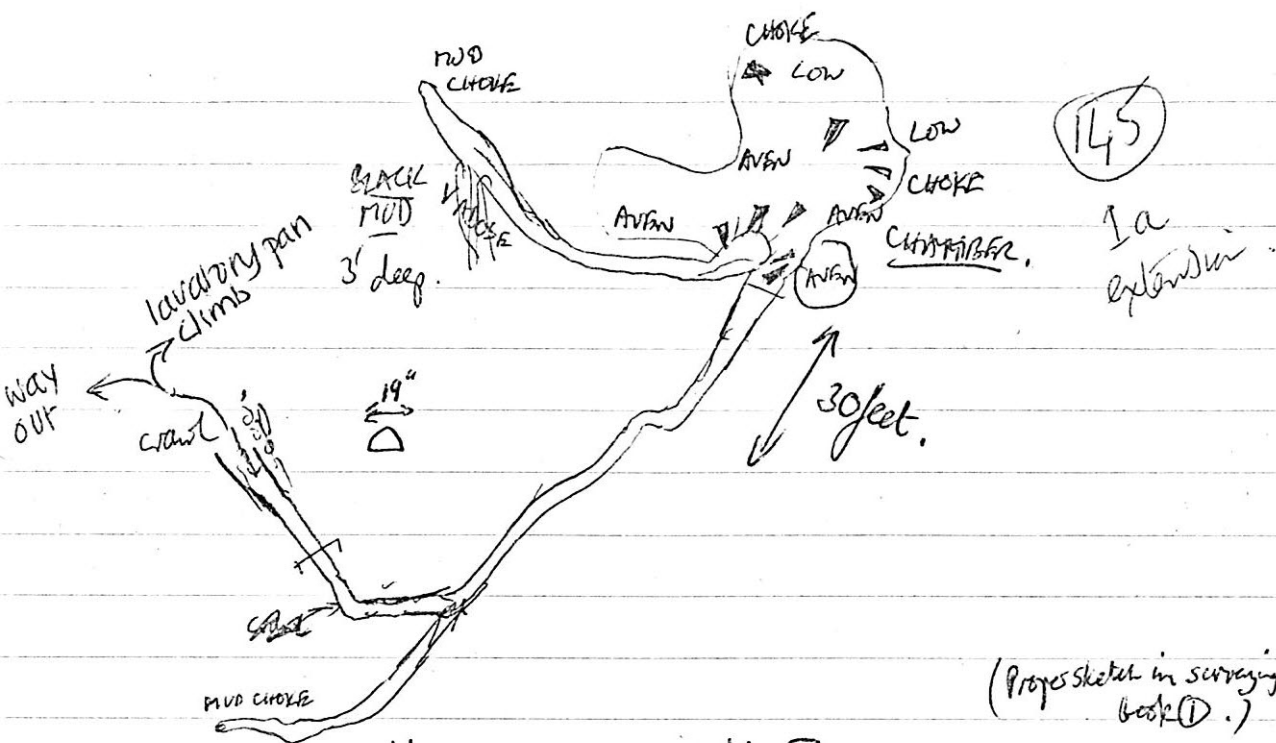
Later examination of a selection of maps displaying relevant markers such as the toll rd. and the ski lift leave us with the impression that the resurgence has been bulldozed to make the track to the ski lift pyramid.

WOLFHÖHLE 145

8 August

Gail & Philip

We were led to the cave by Naomi & Wiggie and went and saw the 'Wolf' (actually, I think it might be a bear) then went and explored the only loose end in the Makins-Van Millingen explorations. Yes, the tube is tight but, after breaking the solid surface with our trusty 'entrenching' tool we were able to plough our way through. It leads, after 30 or 40 ft and a bend to a 15m diameter phreatic tube, left hand leads up (at c. 5°) to a chamber and left right chokes with mud after a bit.



145

1a
expansion

(Proper sketch in surveying book ①.)

WORK HOLE. 8th AUGUST. 145.

Naomí & Wiggly.

Quickly made our way to the 'Big leap' where Wiggly was duly dispatched over the leap and into the passages beyond to collect a rope and belt driver. On Wiggly's return the pair then surveyed their way out towards Wolf Chamber from the lip of the 'Big leap'. Surveying went relatively smoothly except for multiple light failure in the tight pitch by-pass crawl and a very opaque compass (it would not clear!). Finally, in the main passage towards the Toilet Seat Climb the compass fogged forever, the survey was abandoned and the pair made their way out. On the surface the compass unfogged and so Wiggly and Naomí did a surface survey from Wolf Hible entrance to the iron cross on the col. Naomí,

9 AUGUST 1983

142 - 41 CONNECTION SURVEYING AND DERIGGING

Blasted on down to the foot of the pitch in Stalleweg and surveyed back to one of Dave's Survey Marks in the chamber before the Big Chamber in 142.

Went down the big pitch, admired the bolts ~~to~~ and denigrated the rigging. Wandered around big chamber with bolting kit looking for Mike's hole in the floor but didn't find it. It all looked pretty broken up, somehow. Through that lot there must be a crawl bypass to the big pitch.

Came out and derigged. On the way back did a couple more survey stations at the points where our & Dave's surveys diverged slightly.

Out to the stars & a leisurely walk back. Back at Camp at 0130.

7½ hours underground

P.M.S + O.G.S.

ps. dusty phreatic passages that have not been touched since the last ice age are not recommended for contact lens wearers