



Cambridge University Caving Club
Expedition 2018
*in the Loser Plateau and
Schwarzmooskogel Hohlsystem*

Ruairidh Macleod

(Not a picture of a cave...)

CUCC Expedition 2018

- 6 weeks: 7th July to 18th August
- Training of new expedition cavers and survey software development
- Continued extension and surveying of the Schwarzmooskogelhohlensystem
- 24 university student members
- 4 main caves focused on for new discovery
- Surface survey and prospecting of new entrances on Loser Plateau

Mandatory picture of cave... Impressive formations in the new extensions of FischGesicht Hohle

Photo: Mike Butcher



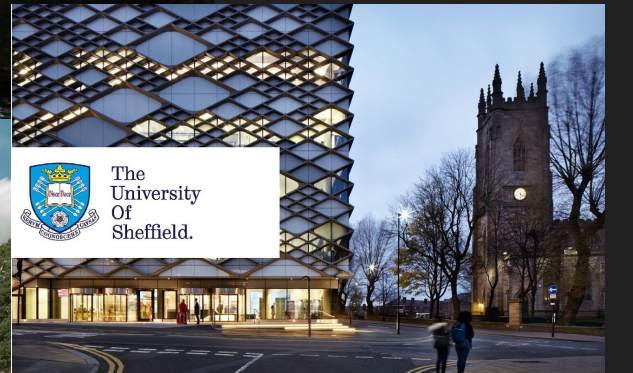
Photos: George Breley; Becka Lawson



UNIVERSITY OF CAMBRIDGE



Photo: Wikimedia Commons





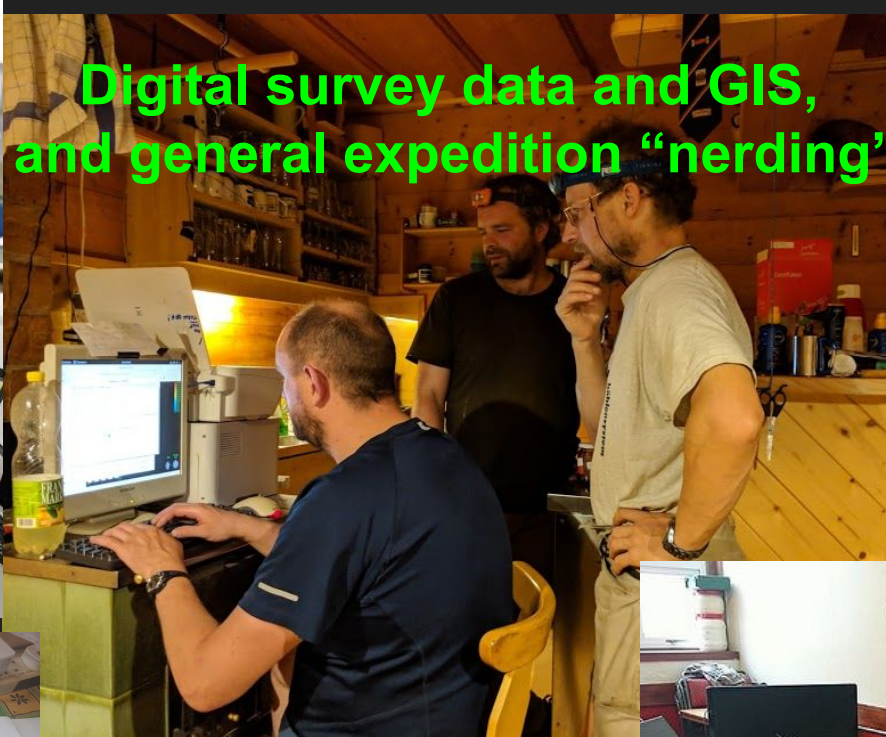
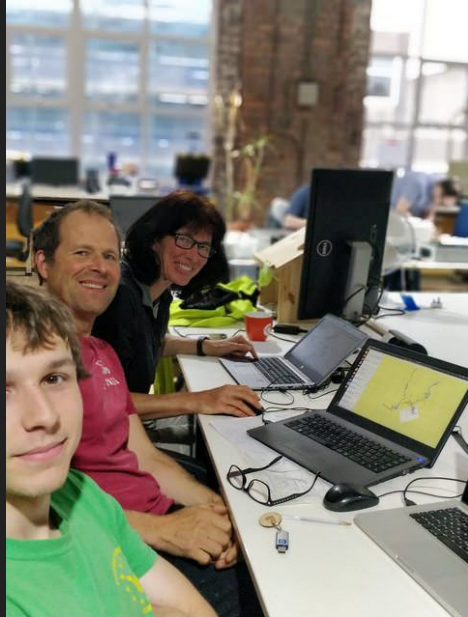
Stone Bridge Top Camp Bivvy on the Loser Plateau

Electronic innovations for improving the expedition



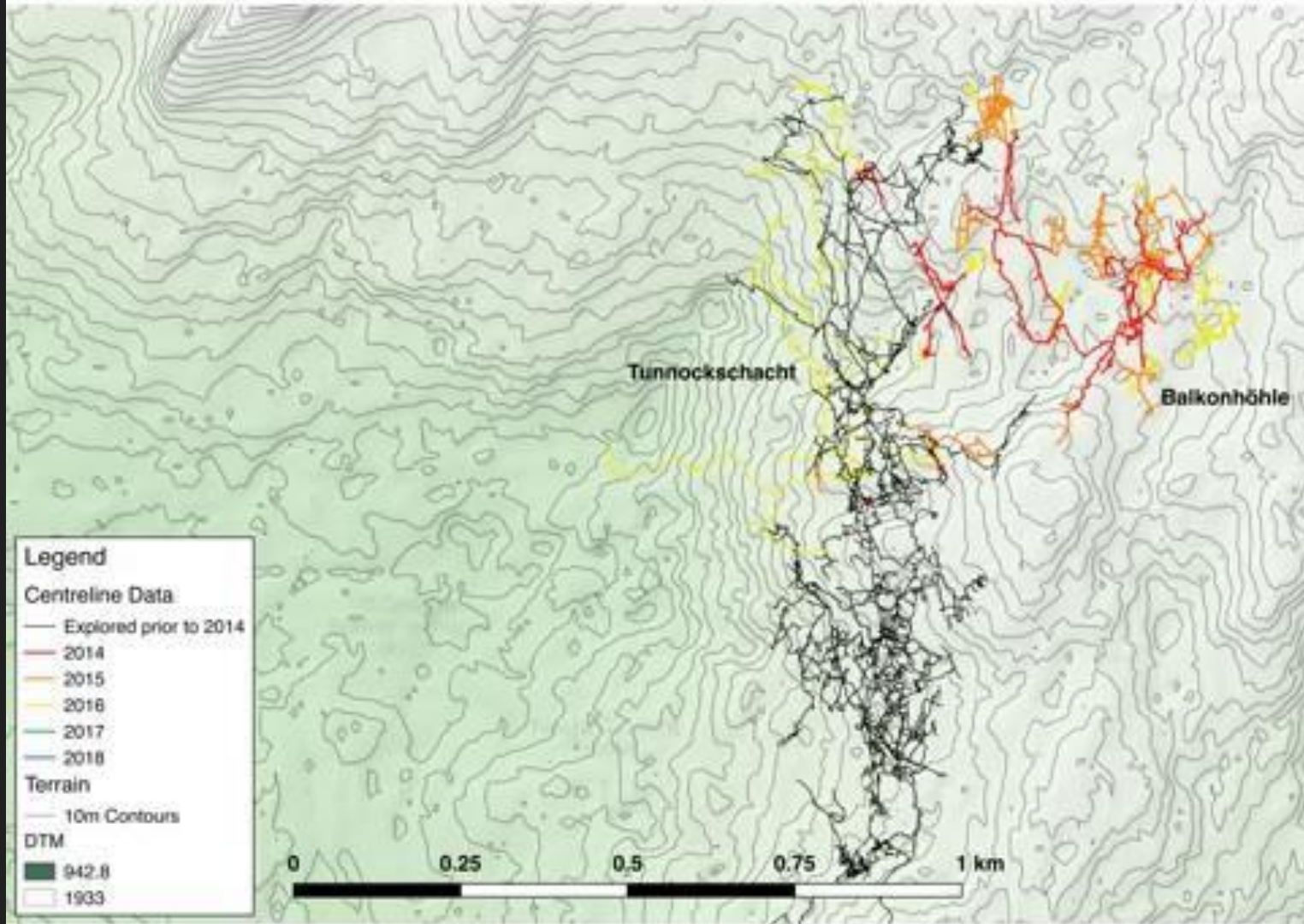
Photos: Becka Lawson

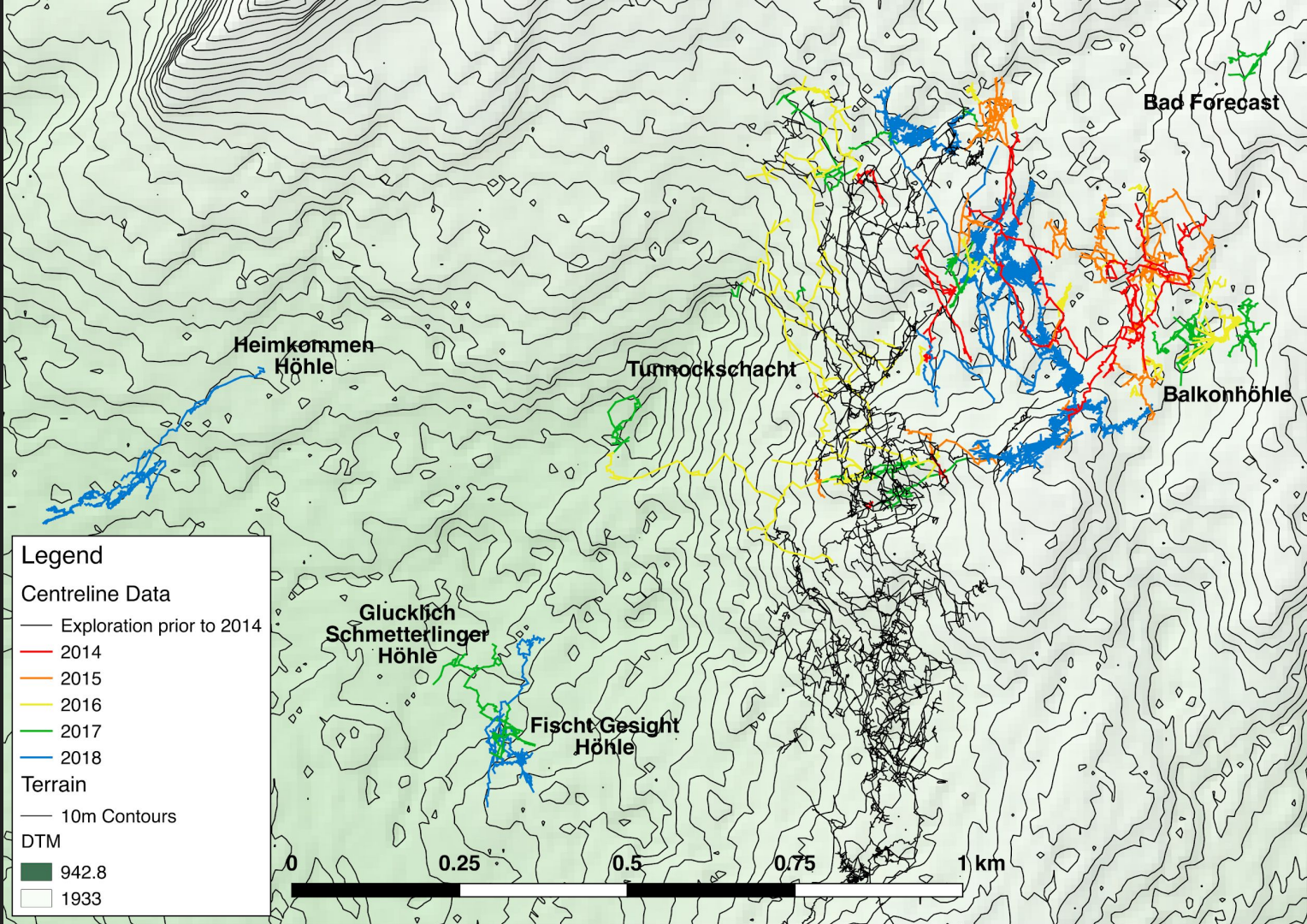
Digital survey data and GIS, and general expedition "nerding"



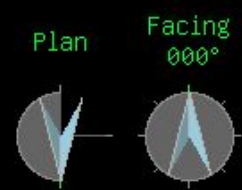
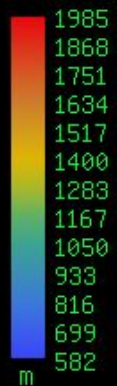
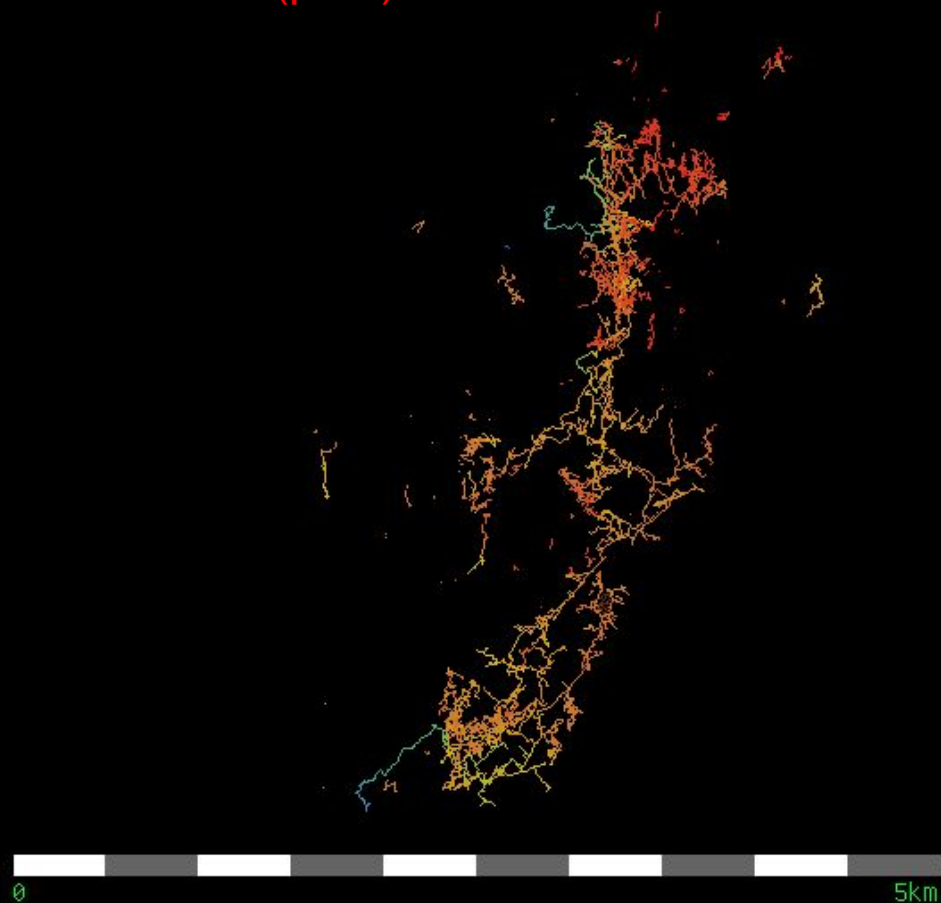
Photos: Rob Watson; Becka Lawson; George Breley.



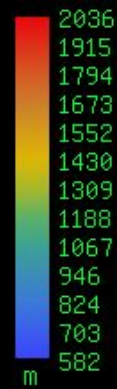
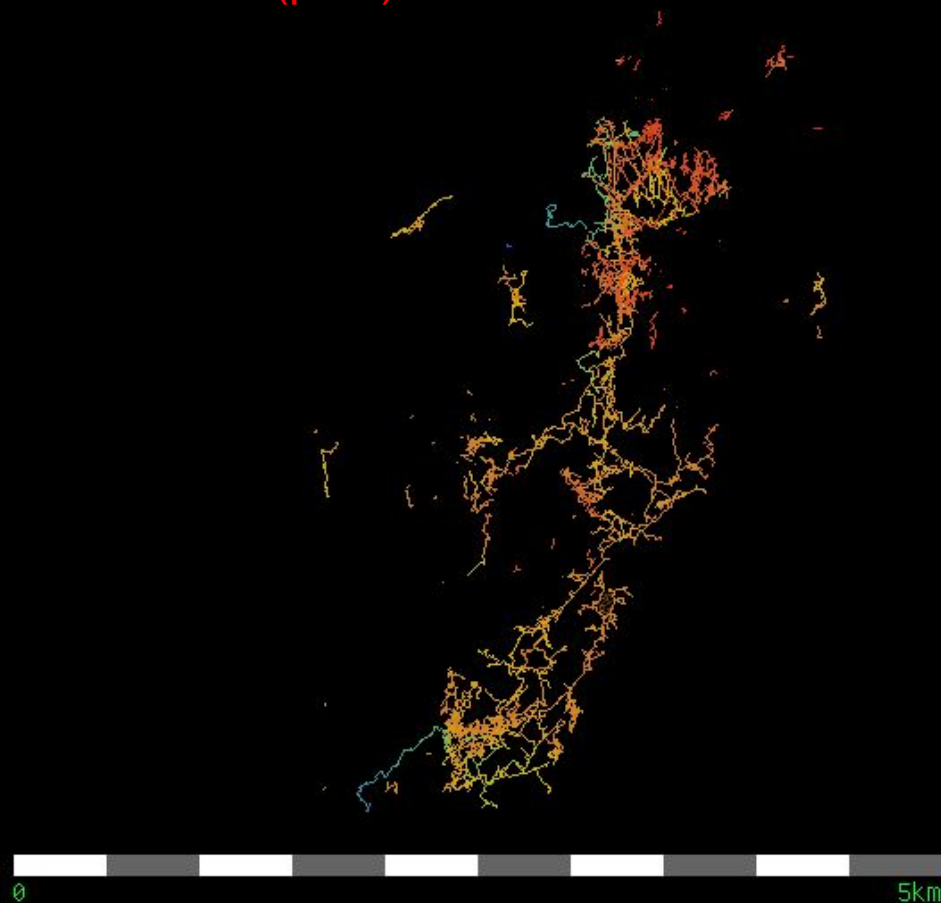




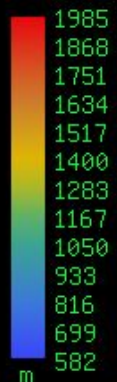
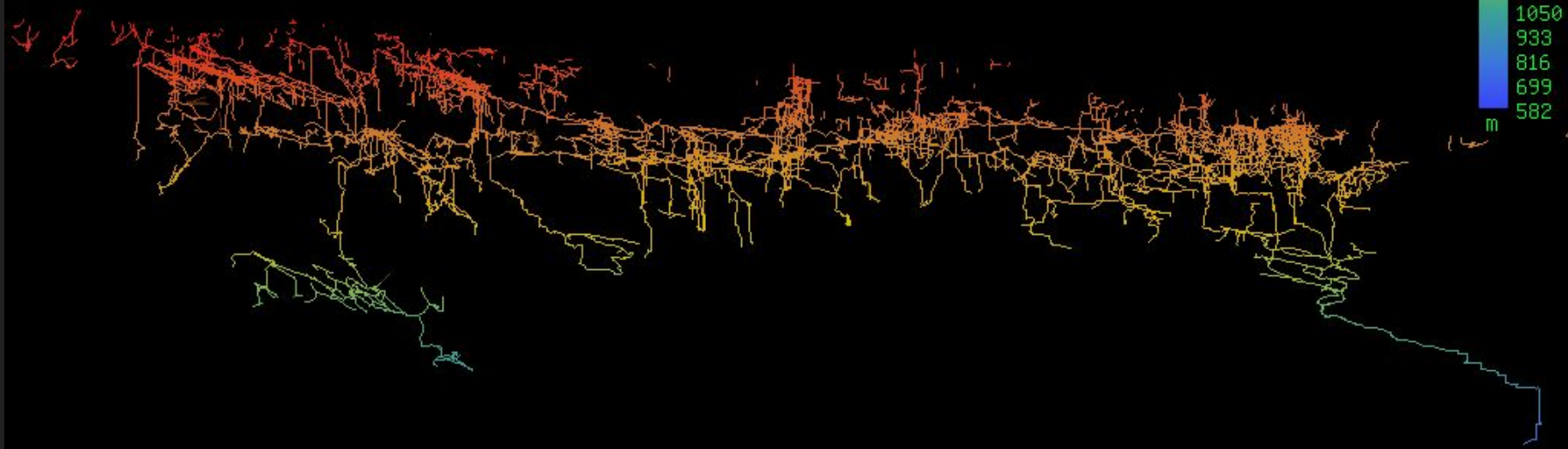
Extent of discovered cave in 2017 (plan)



Extent of discovered cave in 2018 (plan)



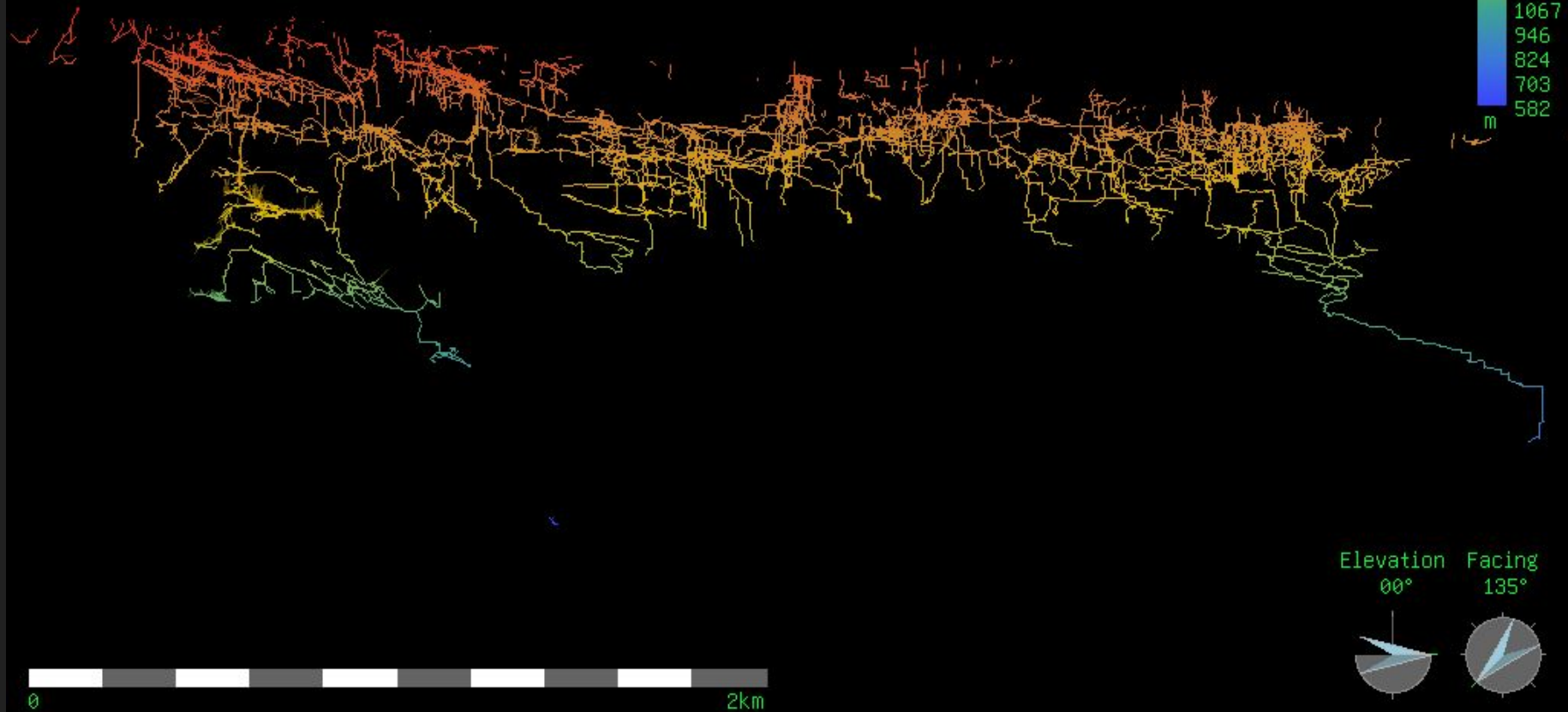
Extent of discovered cave in 2017 (elevation)



Elevation 00° Facing 135°



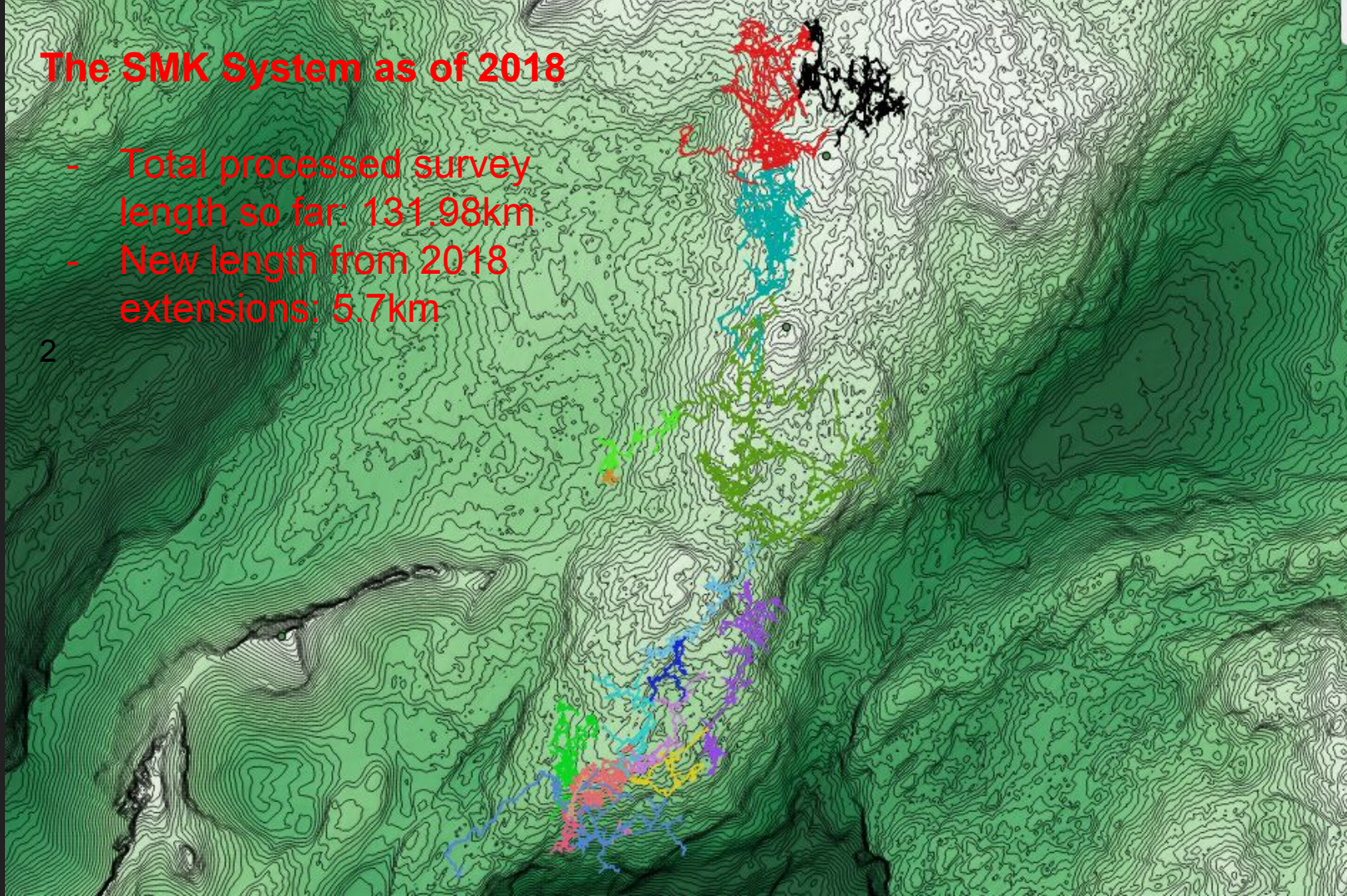
Extent of discovered cave in 2018 (elevation)



The SMK System as of 2018

- Total processed survey length so far: 131.98km
- New length from 2018 extensions: 5.7km

2



Legend

Centreline Data

Unconnected Entrances

- Fischt Gesicht Höhle
- Glücklich Schmetterlinger Höhle
- Heimkommen Höhle

SMK System

- 264 - Balkonhöhle
- 258 - Tunnockschacht
- 204 - Steinbrückenhöhle
- 161 - Kaninchenhöhle
- 107 - Gemsehöhle
- 83
- 136
- 40 - Eishöhle
- 216
- 158
- 144
- 143
- 78
- 88
- 41 - Stellerweghöhle

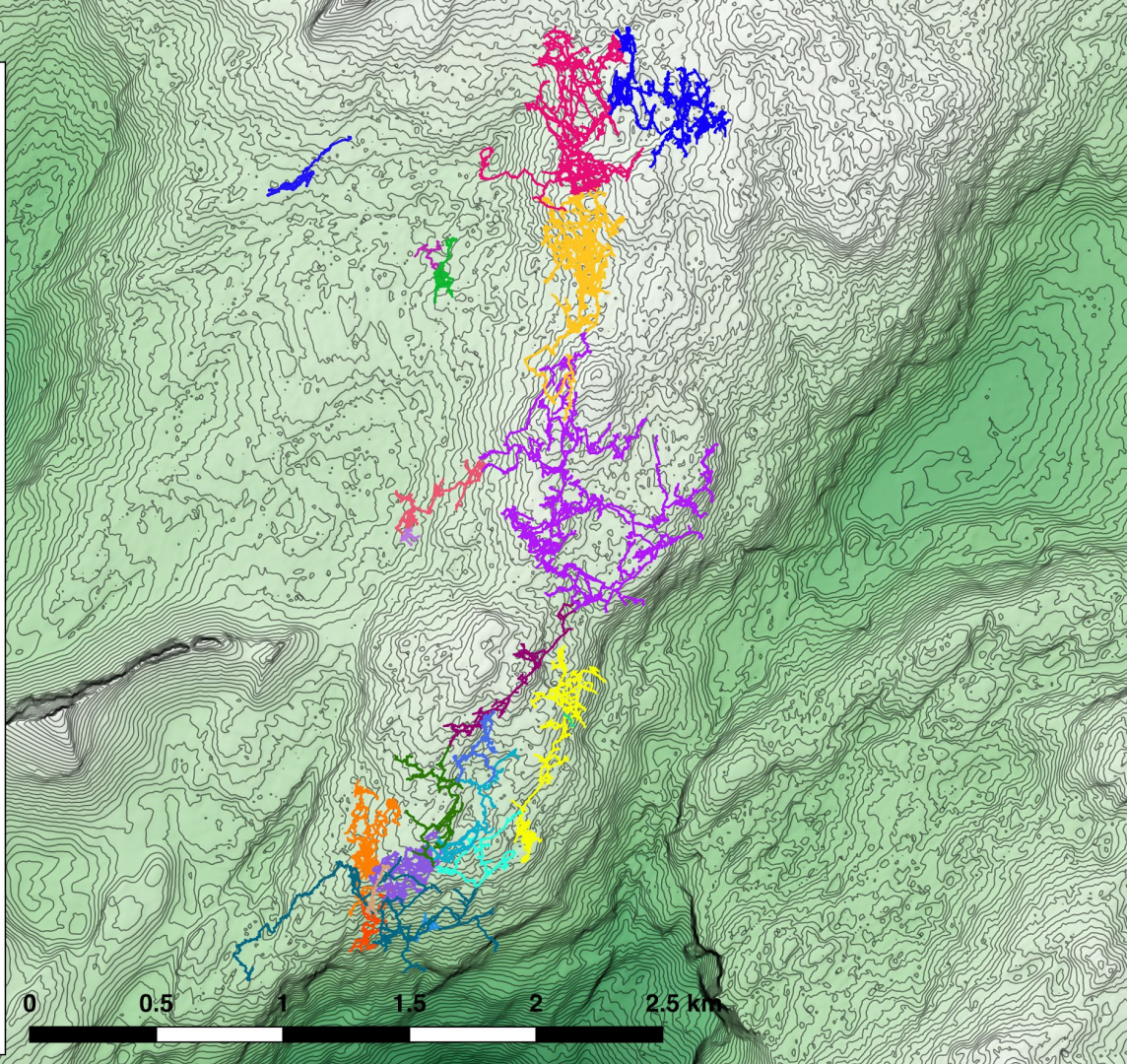
- 115
- 142
- 32
- 87

Terrain

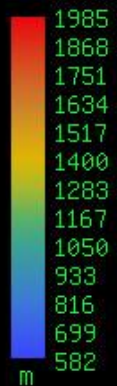
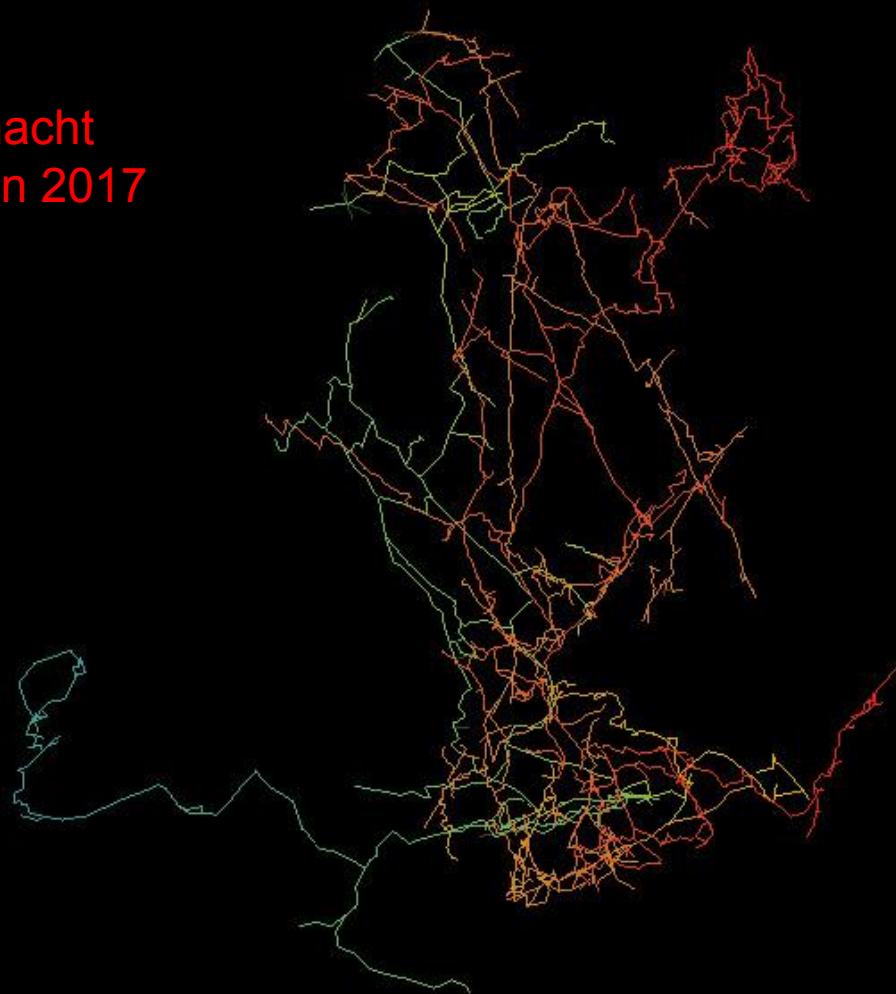
- 10m Contours

DTM

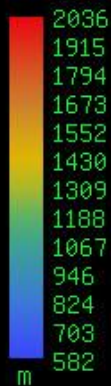
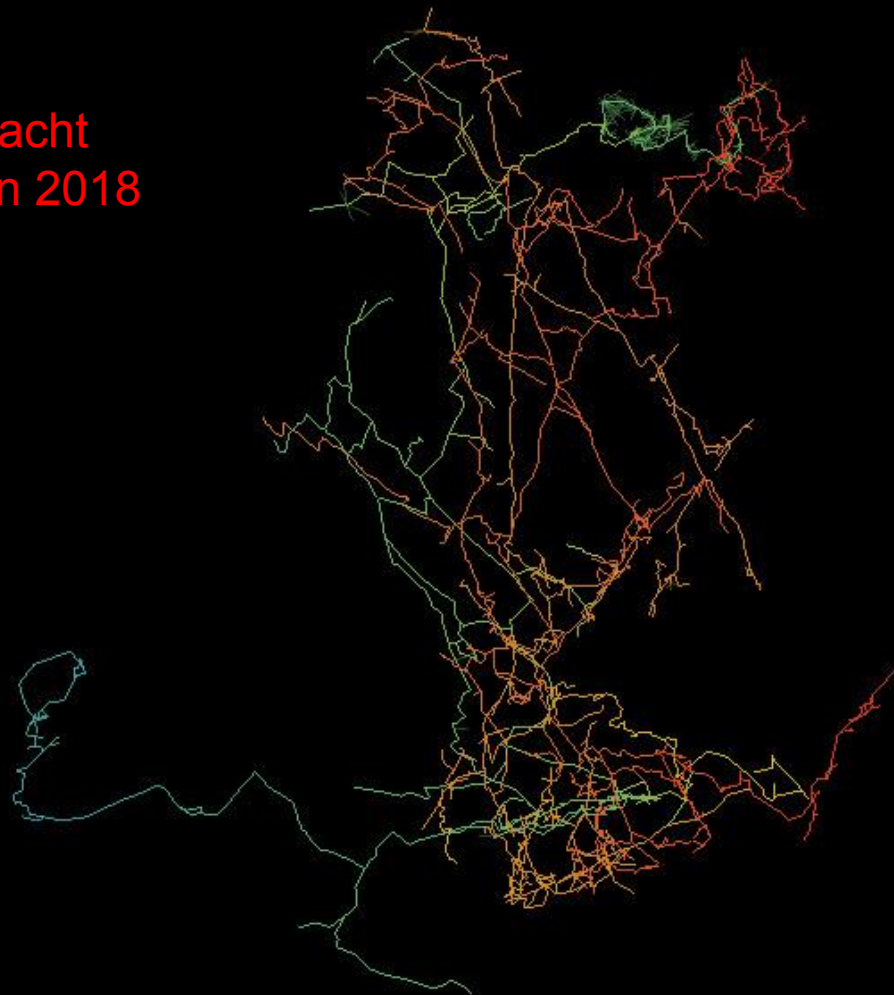
- 942.8
- 1933



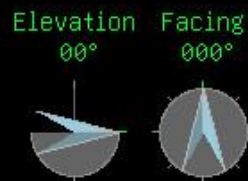
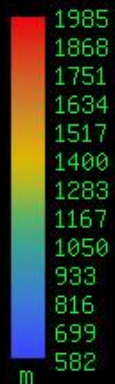
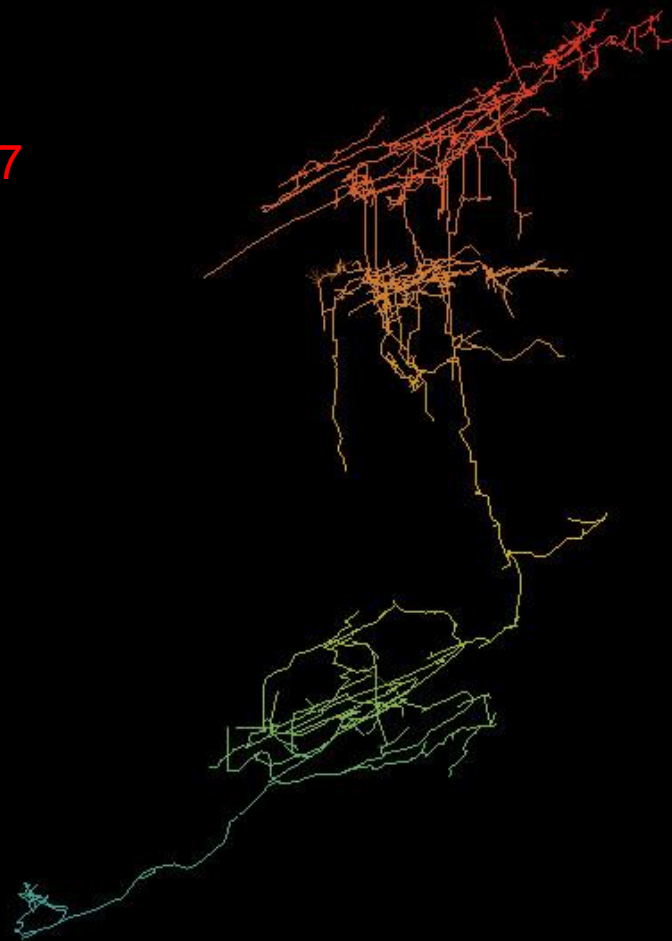
Extent of
Tunnockschacht
discovered in 2017
(plan)



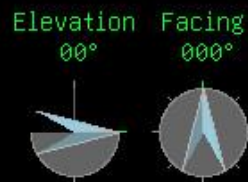
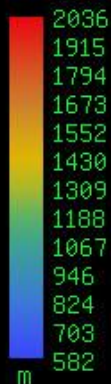
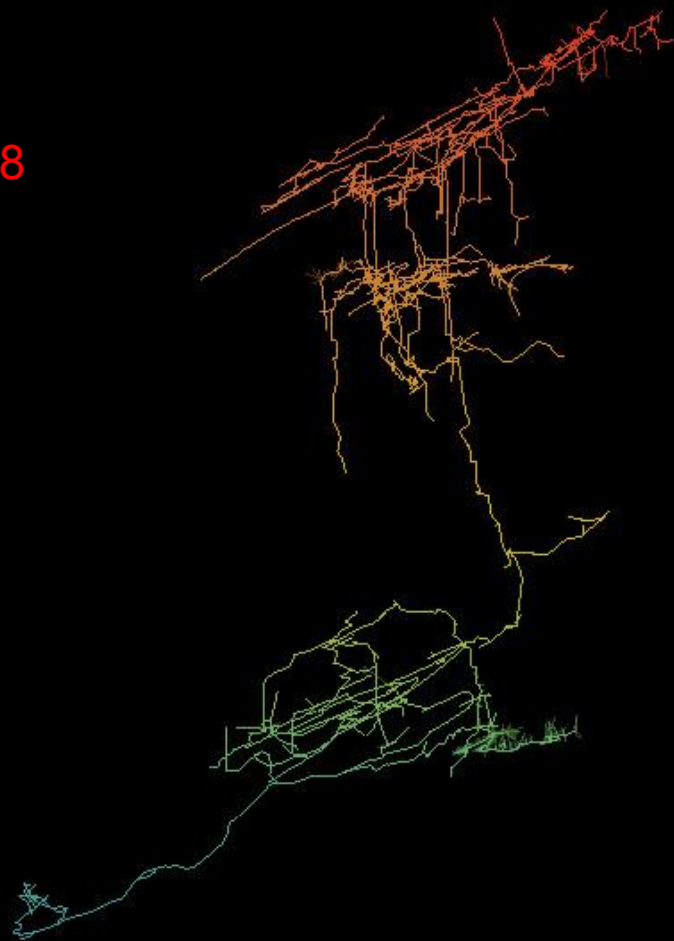
Extent of
Tunnockschacht
discovered in 2018
(plan)



Extent of
Tunnockschacht
discovered in 2017
(elevation)

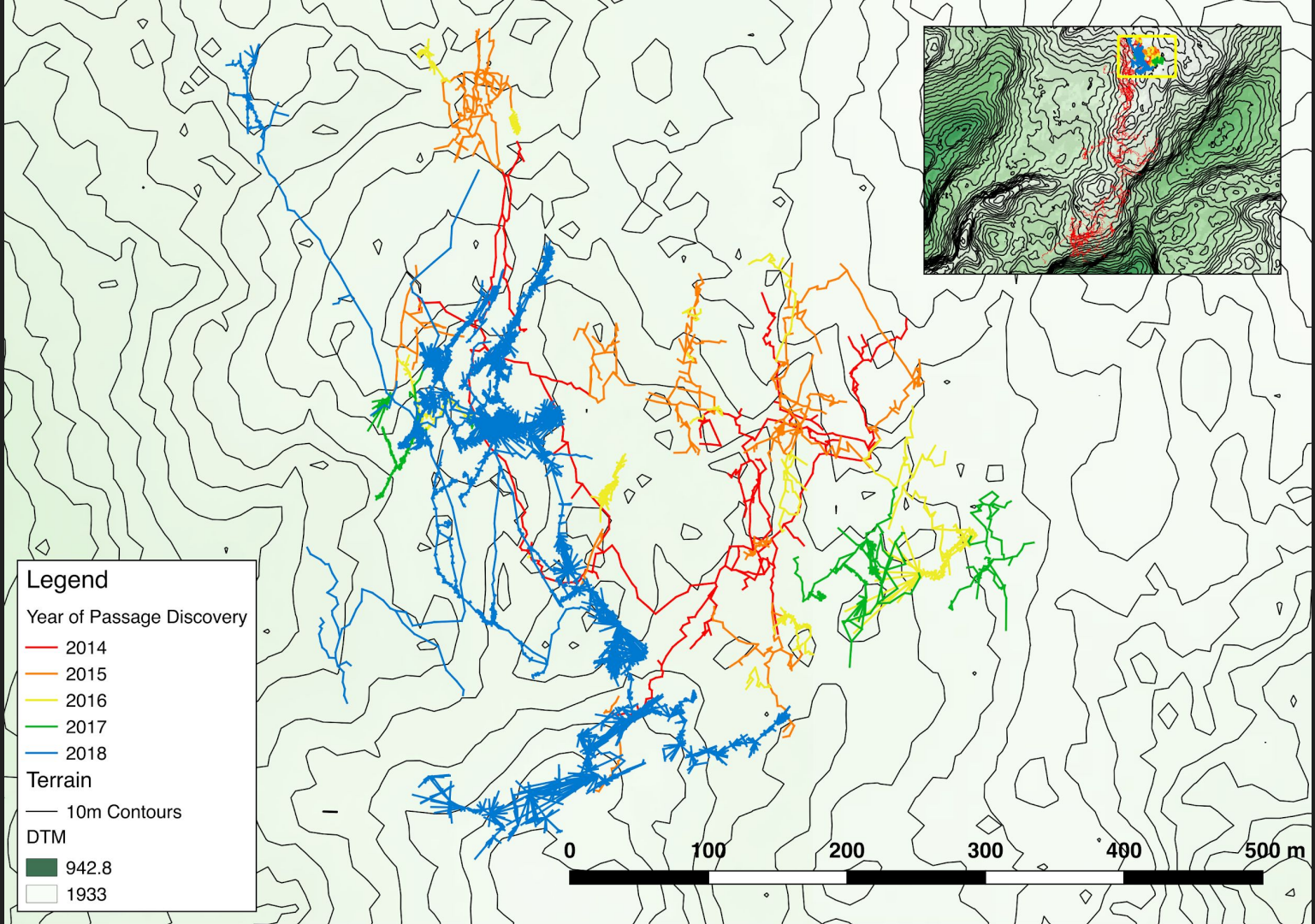


Extent of
Tunnockschacht
discovered in 2018
(elevation)

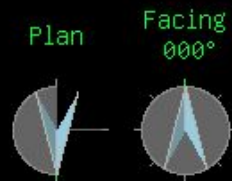
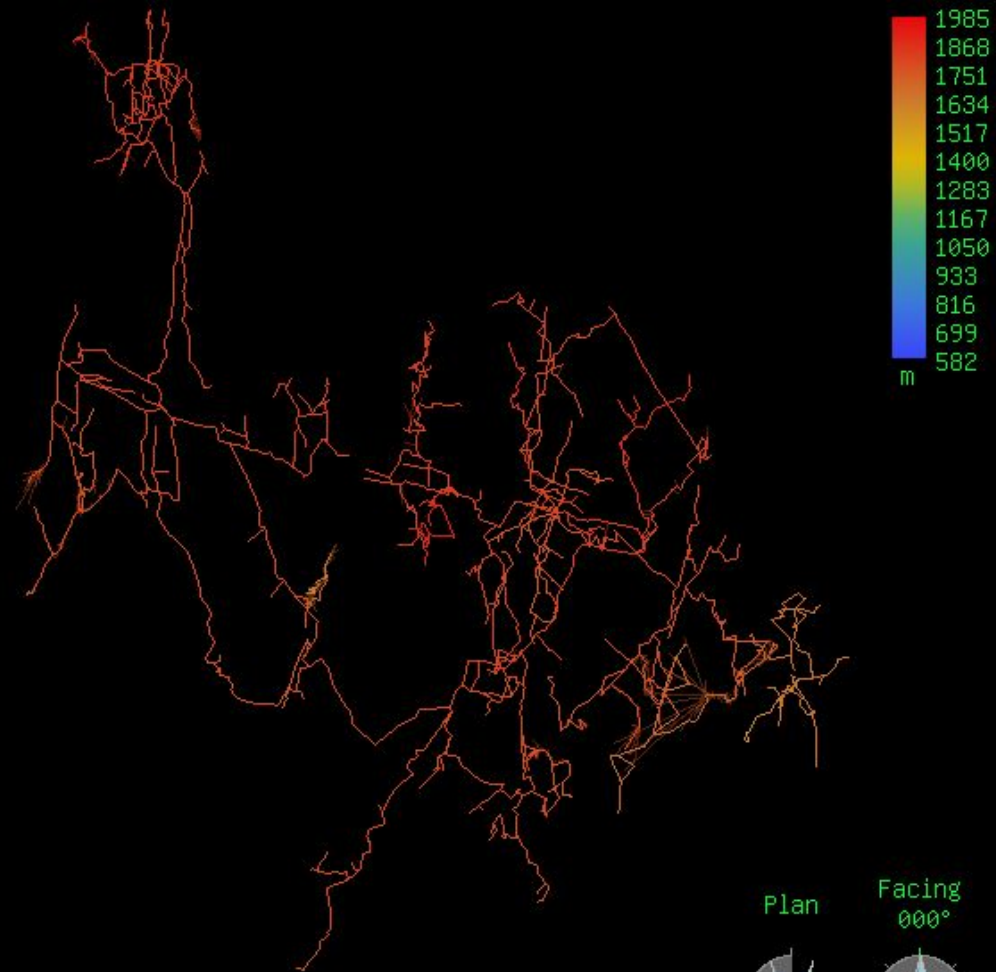




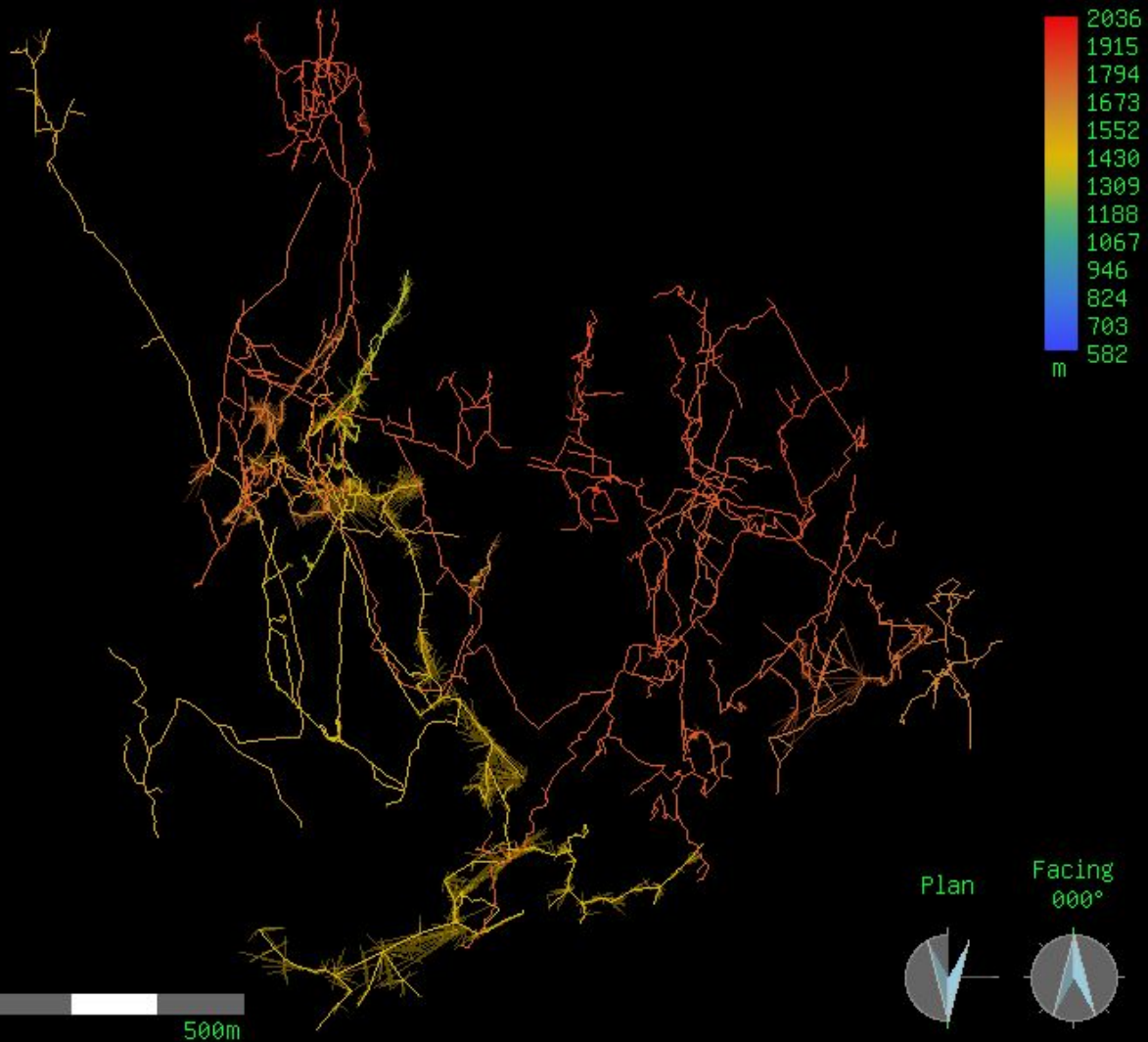




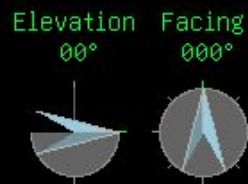
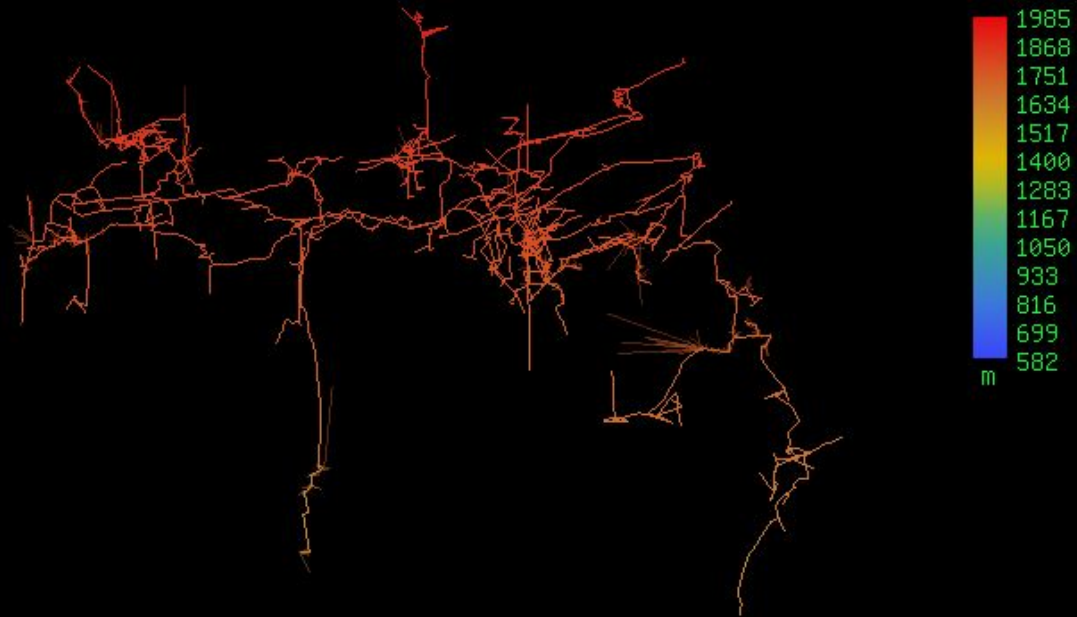
Extent of Balkonhohle discovered in 2017 (plan)



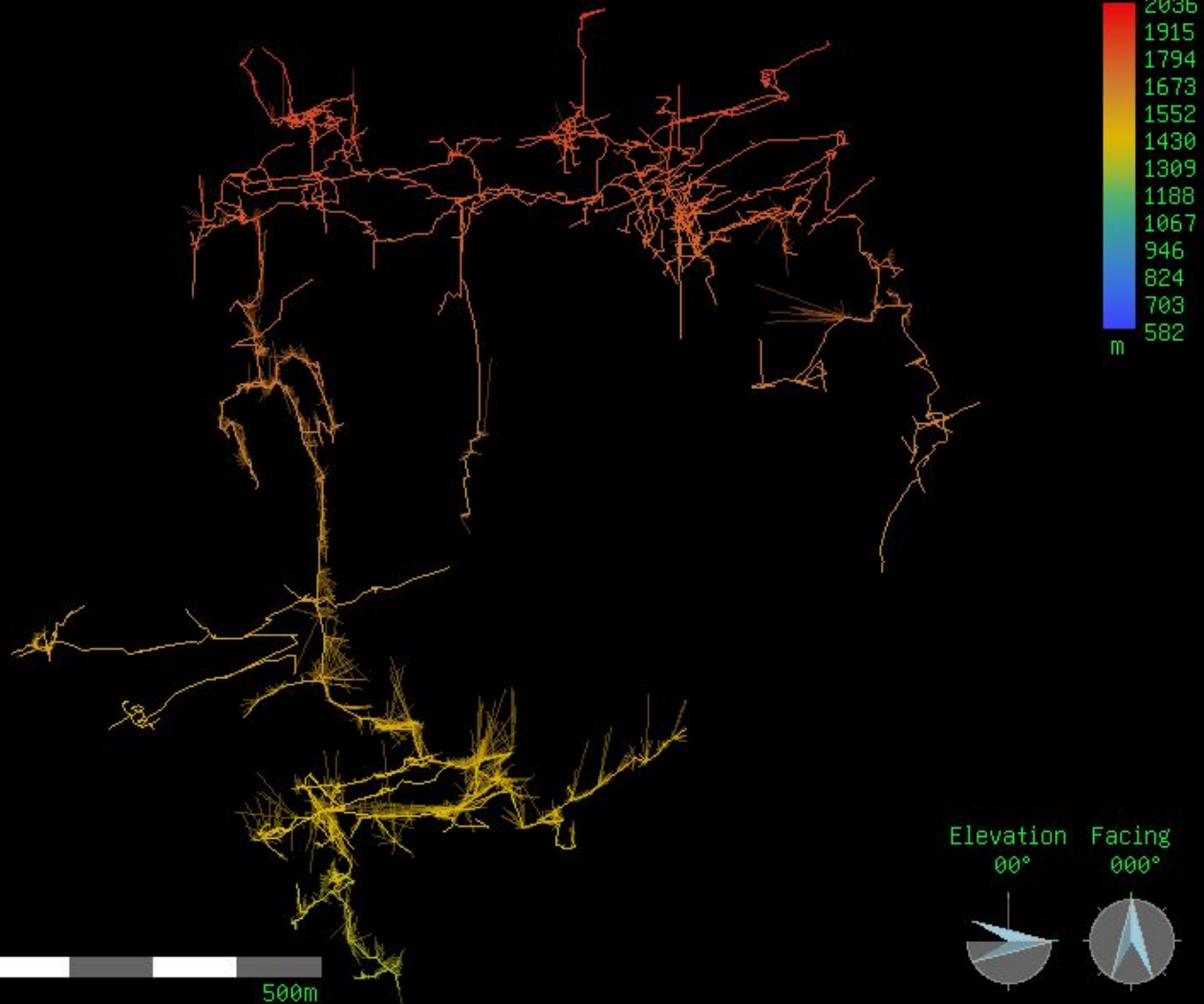
Extent of Balkonhohle
discovered in 2018
(plan)



Extent of Balkonhohle
discovered in 2017
(elevation)



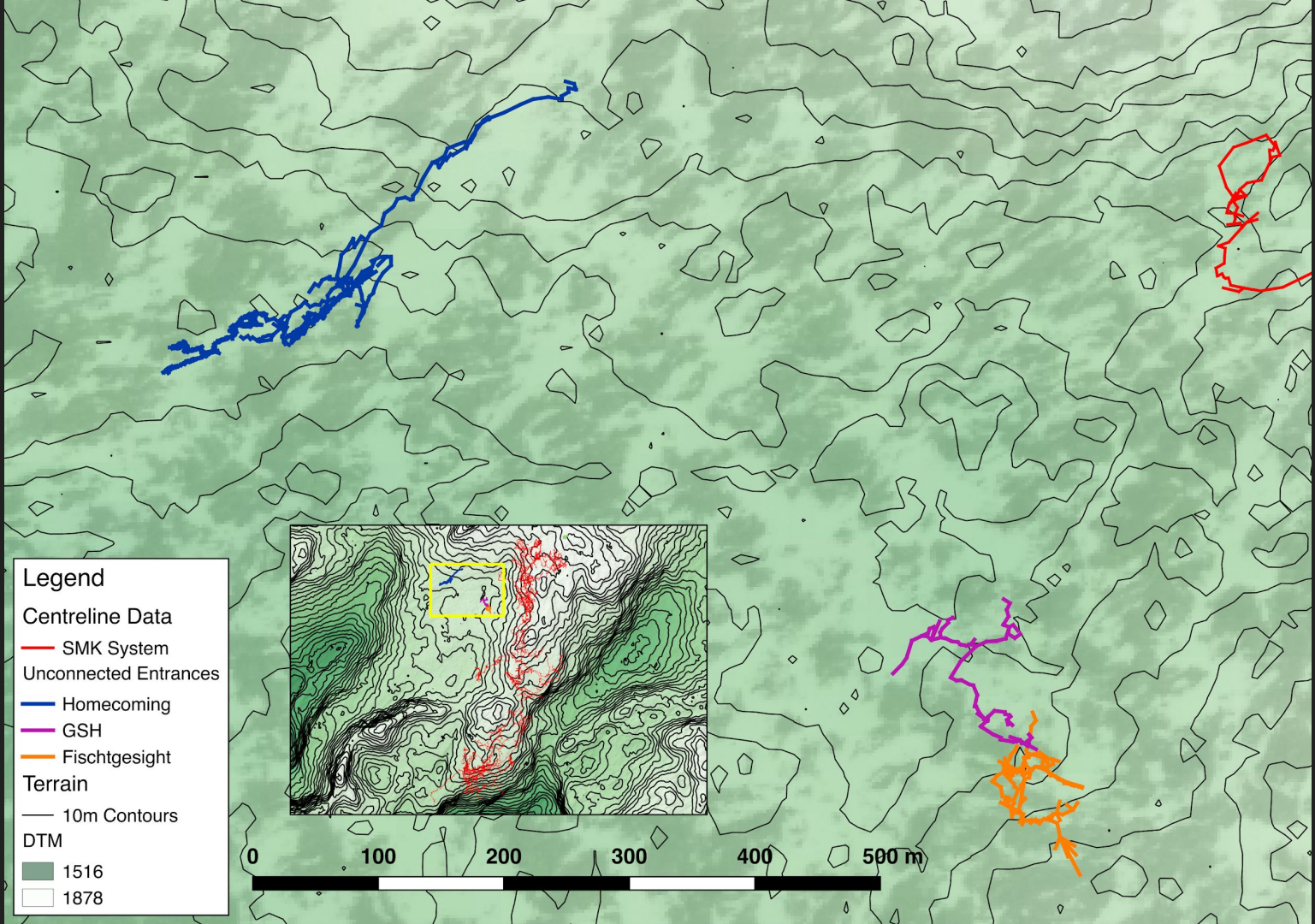
Extent of Balkonhohle
discovered in 2018
(elevation)



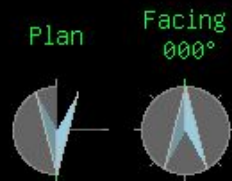
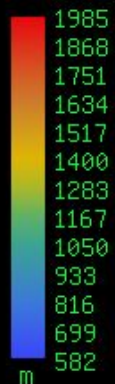




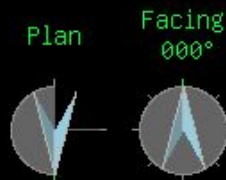
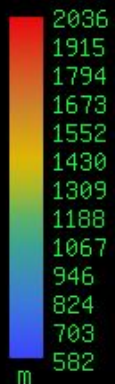
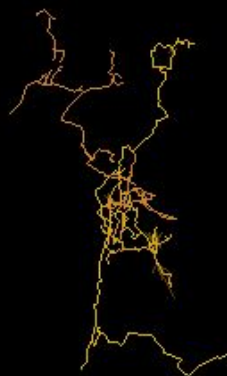
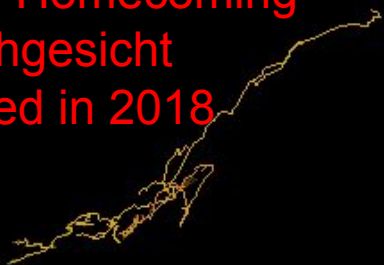




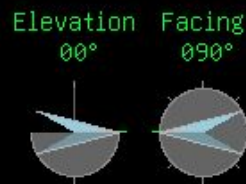
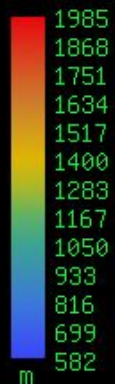
Extent of Homecoming and Fischgesicht discovered in 2017 (plan)



Extent of Homecoming
and Fischgesicht
discovered in 2018
(plan)



Extent of Homecoming and Fischgesicht discovered in 2017 (elevation)



Extent of Homecoming
and Fischgesicht
discovered in 2018
(elevation)

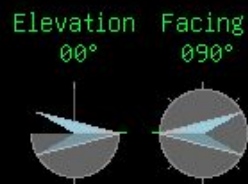
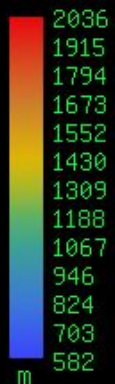






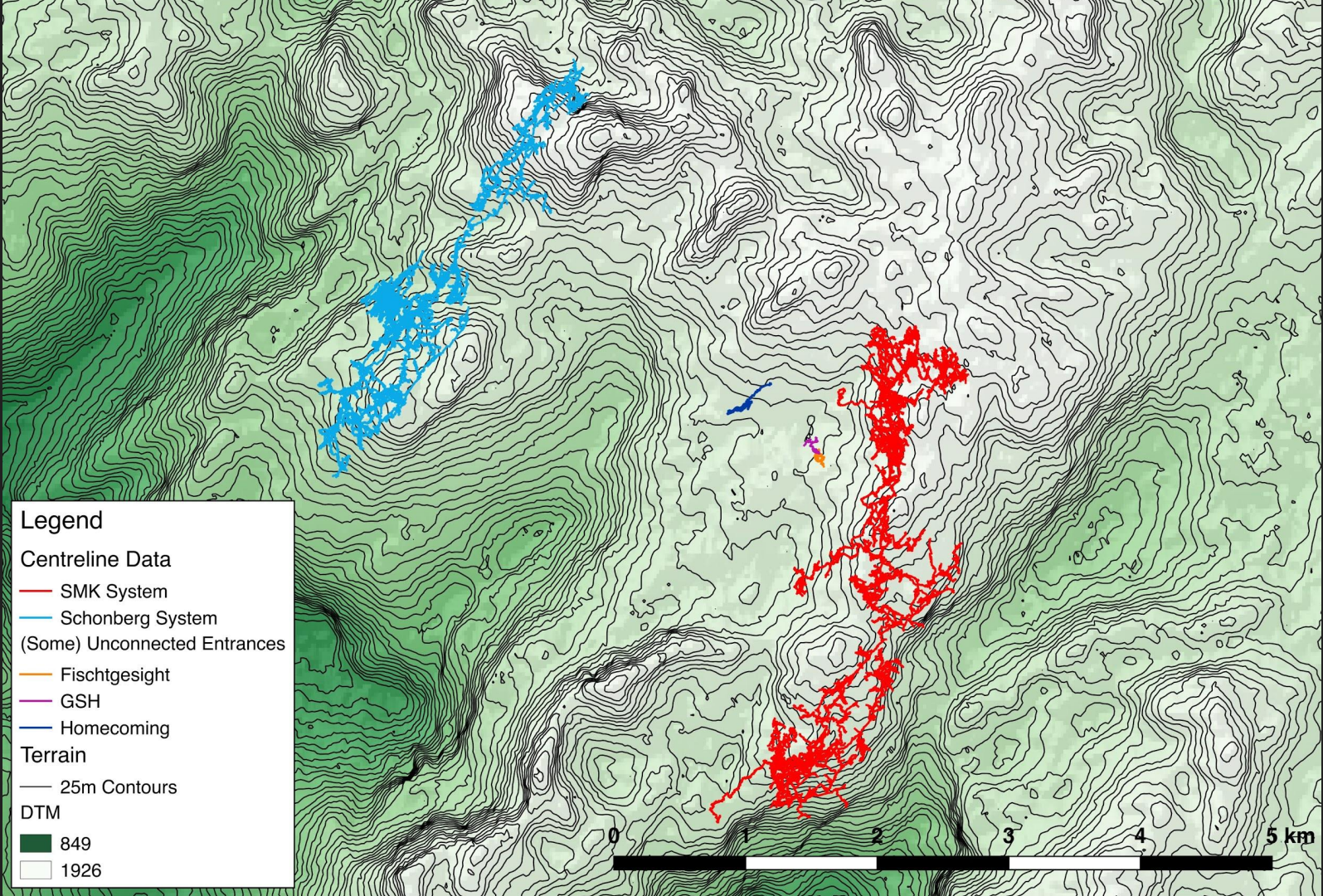


Photo: Rachel Turnbull









Legend

Centreline Data

- SMK System
- Schonberg System
- (Some) Unconnected Entrances
 - Fischtgesicht
 - GSH
 - Homecoming

Terrain

- 25m Contours
- DTM
 - 849
 - 1926





Thanks to:

Katey Bender, Martin Green and Wookey for assistance in maps and surveys

Haydon Saunders, Tom Crossley, Wookey, Rachel Turnbull, Rob Watson and Nadia Cherradi-Raeburn for help in organising the expedition

Expedition members: Adam Aldridge, Adam Henry, Adelaide de Diesbach, Alex Sterling, Anthony Day, Becka Lawson, Cat Henry, Chris Densham, Christopher Holt, Dickon Morris, Frank Tully, George Breley, Haydon Saunders, Jacob Puhalo-Smith, Jim Blackford, Jon Arne Toft, Julia Day, Lisa Smith, Luke Stangroom, Lydia Leather, Mark Shinwell, Max Weiser, Michael Holliday, Michael Sargent, Mike Butcher, Nadia Cherradi-Raeburn, Natalie Uomini, Olly Hall, Paul Fox, Phil Underwood, Philip Sargent, Philip Withnail, Rachel Turnbull, Radost Waszkiewicz, Ruairidh Macleod, Ryan Boulton, Todd Rye, Tom Crossley, Typhon King and Wookey



UNIVERSITY OF
CAMBRIDGE



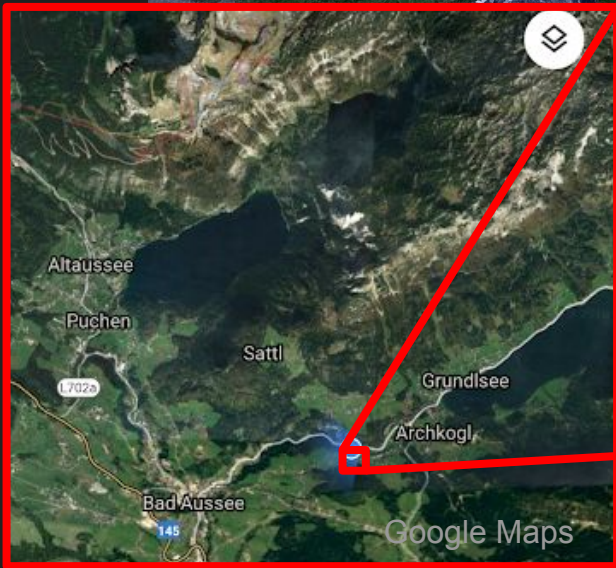
BCRA



The
GHAR PARAU FOUNDATION
Funding British Cave Exploration and Cave Science



Photo: Ruairiadh Macleod



Base Camp at Gasthof Staud'nwirt Potato Hut

Photos: Philip Sargent; Becca Lawson